

Manufacturer/Supplier:

WUXI DONGLIN SCI&TECH DEVELOPMENT CO., LTD

Address: A1-203 Mingpin CityII, No.8 Xihudong Road, Liangxi District
Wuxi Jiangsu Province, China

TELE: 86-510-82732223

FAX: 86-510-82720101-8014

Web : www.dldevelop.com

Email: info@dldevelop.com.cn service@dldevelop.com.cn

Product name: Rabbit anti-Colipase Antibody

Catalog: DL96211A

Synonyms: Colipase

Immunogen: Recombinant full length protein of human Colipase

Form: Liquid

Concentration: 1mg/mL

Size: 100 ul/50 ul

Host: Rabbit

Reactivity: Human, Mouse

Application: WB, IF/IC

Clonality: Polyclonal

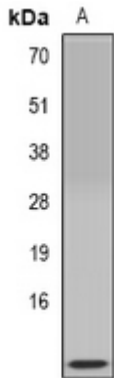
Dilution: WB (1/500 - 1/2000),
IF/IC (1/10 - 1/100)

Entrez Gene: 1208/109791

| | |
|----------------------|---|
| SwissProt: | P04118/Q9CQC2 |
| Purification: | The antibody was purified by immunogen affinity chromatography. |
| Buffer: | Liquid in 0.42% Potassium phosphate, 0.87% Sodium chloride, pH 7.3, 30% glycerol, and 0.01% sodium azide. |

WB description:

Western blot analysis of Colipase expression in mouse pancreas
(A) whole cell lysates.



IF/ICC description:

Immunofluorescent analysis of Colipase staining in Hela cells.
Formalin-fixed cells were permeabilized with 0.1% Triton X-100 in

TBS for 5-10 minutes and blocked with 3% BSA-PBS for 30 minutes at room temperature. Cells were probed with the primary antibo



Storage:

Store at -20°C. Avoid repeated freeze / thaw cycles.