

Manufacturer/Supplier:

WUXI DONGLIN SCI&TECH DEVELOPMENT CO., LTD

Address: A1-203 Mingpin CityII, No.8 Xihudong Road, Liangxi District
Wuxi Jiangsu Province, China

TELE: 86-510-82732223

FAX: 86-510-82720101-8014

Web : www.dldevelop.com

Email: info@dldevelop.com.cn service@dldevelop.com.cn

Product name: Rabbit anti-UBE2B Antibody

Catalog: DL96198A

Synonyms: RAD6B; Ubiquitin-conjugating enzyme E2 B;
RAD6 homolog B; HR6B; hHR6B; Ubiquitin
carrier protein B; Ubiquitin-conjugating enzyme
E2-17 kDa; Ubiquitin-protein ligase B

Immunogen: Recombinant full length protein of human UBE2B

Form: Liquid

Concentration: 1mg/mL

Size: 100 ul/50 ul

Host: Rabbit

Reactivity: Human, Mouse, Rat

Application: WB, IHC

Clonality: Polyclonal

Dilution: WB (1/500 - 1/2000),

IHC (1/50 - 1/200)

Entrez Gene: 7320/22210/81816

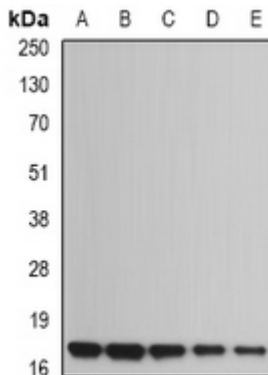
SwissProt: P63146/P63147/P63149

Purification: The antibody was purified by immunogen affinity chromatography.

Buffer: Liquid in 0.42% Potassium phosphate, 0.87% Sodium chloride, pH 7.3, 30% glycerol, and 0.01% sodium azide.

WB description:

Western blot analysis of UBE2B expression in Jurkat (A), NIH3T3 (B), mouse heart (C), rat heart (D), rat brain (E) whole cell lysates.



IHC description:

Immunohistochemical analysis of UBE2B staining in rat lung formalin fixed paraffin embedded tissue section. The section was pre-treated using heat mediated antigen retrieval with sodium citrate buffer (pH 6.0). The section was then incubated with the antibody at room temperature and detected using an HRP conjugated compact polymer system. DAB was used as the chromogen. The section was then counterstained with haematoxylin and mounted with DPX.

Storage:

Store at -20°C. Avoid repeated freeze / thaw cycles.