

Manufacturer/Supplier:

WUXI DONGLIN SCI&TECH DEVELOPMENT CO., LTD

Address: A1-203 Mingpin CityII, No.8 Xihudong Road, Liangxi District
Wuxi Jiangsu Province, China

TELE: 86-510-82732223

FAX: 86-510-82720101-8014

Web : www.dldevelop.com

Email: info@dldevelop.com.cn service@dldevelop.com.cn

Product name: Rabbit anti-PDC-E2 Antibody

Catalog: DL96184A

Synonyms: DLTa; Dihydrolipoyllysine-residue
acetyltransferase component of pyruvate
dehydrogenase complex, mitochondrial; 70 kDa
mitochondrial autoantigen of primary biliary
cirrhosis; PBC; Dihydrolipoamide acetyltransferase
component of pyruvate dehydrogenase comp

Immunogen: Recombinant full length protein of human PDC-E2

Form: Liquid

Concentration: 1mg/mL

Size: 100 ul/50 ul

Host: Rabbit

Reactivity: Human, Mouse, Rat

Application: WB, IF/IC

Clonality: Polyclonal

Dilution: WB (1/500 - 1/2000),
IF/IC (1/10 - 1/100)

Entrez Gene: 1737/235339/81654

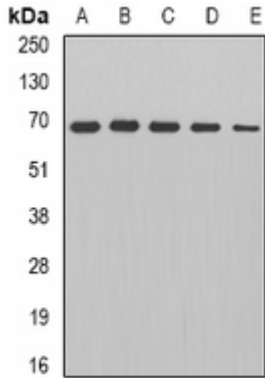
SwissProt: P10515/Q8BMF4/P08461

Purification: The antibody was purified by immunogen affinity chromatography.

Buffer: Liquid in 0.42% Potassium phosphate, 0.87% Sodium chloride, pH 7.3, 30% glycerol, and 0.01% sodium azide.

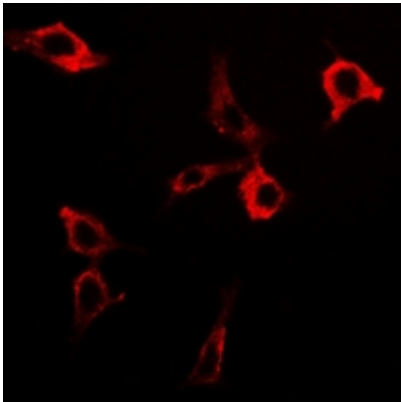
WB description:

Western blot analysis of PDC-E2 expression in HepG2 (A), Jurkat (B), mouse heart (C), rat brain (D), rat kidney (E) whole cell lysates.



IF/ICC description:

Immunofluorescent analysis of PDC-E2 staining in HeLa cells. Formalin-fixed cells were permeabilized with 0.1% Triton X-100 in TBS for 5-10 minutes and blocked with 3% BSA-PBS for 30 minutes at room temperature. Cells were probed with the primary antibody



Storage:



Store at -20°C. Avoid repeated freeze / thaw cycles.