

Manufacturer/Supplier:

WUXI DONGLIN SCI&TECH DEVELOPMENT CO., LTD

Address: A1-203 Mingpin CityII, No.8 Xihudong Road, Liangxi District
Wuxi Jiangsu Province, China

TELE: 86-510-82732223

FAX: 86-510-82720101-8014

Web : www.dldevelop.com

Email: info@dldevelop.com.cn service@dldevelop.com.cn

Product name: Rabbit anti-SerpinB1 Antibody

Catalog: DL96181A

Synonyms: ELANH2; MNEI; PI2; Leukocyte elastase inhibitor;
LEI; Monocyte/neutrophil elastase inhibitor; EI;
M/NEI; Peptidase inhibitor 2; PI-2; Serpin B1

Immunogen: Recombinant full length protein of human SerpinB1

Form: Liquid

Concentration: 1mg/mL

Size: 100 ul/50 ul

Host: Rabbit

Reactivity: Human, Mouse, Rat

Application: WB, IF/IC

Clonality: Polyclonal

Dilution: WB (1/500 - 1/2000),
IF/IC (1/20 - 1/100)

Entrez Gene: 1992

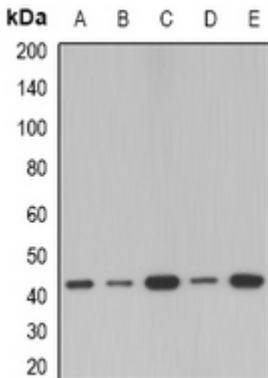
SwissProt: P30740

Purification: The antibody was purified by immunogen affinity chromatography.

Buffer: Liquid in 0.42% Potassium phosphate, 0.87% Sodium chloride, pH 7.3, 30% glycerol, and 0.01% sodium azide.

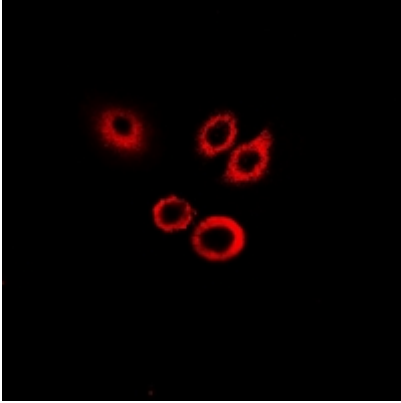
WB description:

Western blot analysis of SerpinB1 expression in MCF7 (A), A549 (B), mouse lung (C), mouse spleen (D), rat spleen (E) whole cell lysates.



IF/ICC description:

Immunofluorescent analysis of SerpinB1 staining in Hela cells. Formalin-fixed cells were permeabilized with 0.1% Triton X-100 in TBS for 5-10 minutes and blocked with 3% BSA-PBS for 30 minutes at room temperature. Cells were probed with the primary antibo



Storage:

Store at -20°C. Avoid repeated freeze / thaw cycles.