

Manufacturer/Supplier:

WUXI DONGLIN SCI&TECH DEVELOPMENT CO., LTD

Address: A1-203 Mingpin CityII, No.8 Xihudong Road, Liangxi District
Wuxi Jiangsu Province, China

TELE: 86-510-82732223

FAX: 86-510-82720101-8014

Web : www.dldevelop.com

Email: info@dldevelop.com.cn service@dldevelop.com.cn

Product name: Rabbit anti-BAF155 Antibody

Catalog: DL96159A

Synonyms: BAF155; SWI/SNF complex subunit SMARCC1;
BRG1-associated factor 155; BAF155; SWI/SNF
complex 155 kDa subunit; SWI/SNF-related
matrix-associated actin-dependent regulator of
chromatin subfamily C member 1

Immunogen: Recombinant full length protein of human BAF155

Form: Liquid

Concentration: 1mg/mL

Size: 100 ul/50 ul

Host: Rabbit

Reactivity: Human, Mouse, Rat

Application: WB, IHC, IP, ChIP

Clonality: Polyclonal

Dilution: WB (1/500 - 1/2000),
IHC (1/50 - 1/200), IP (1/50 -
1/200), ChIP (1/20 - 1/100)

Entrez Gene: 6599/20588

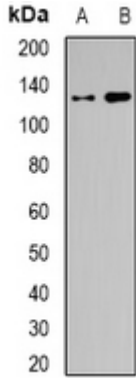
SwissProt: Q92922/P97496

Purification: The antibody was purified by immunogen affinity chromatography.

Buffer: Liquid in 0.42% Potassium phosphate, 0.87% Sodium chloride, pH 7.3, 30% glycerol, and 0.01% sodium azide.

WB description:

Western blot analysis of BAF155 expression in SW620 (A), HEK293T (B) whole cell lysates.



IHC description:

Immunohistochemical analysis of BAF155 staining in human kidney formalin fixed paraffin embedded tissue section. The section was pre-treated using heat mediated antigen retrieval with sodium citrate buffer (pH 6.0). The section was then incubated with the antibody at room temperature and detected using an HRP conjugated compact polymer system. DAB was used as the chromogen. The section was then counterstained with haematoxylin and mounted with DPX.

IP description:

ChIP description:

Storage:



Store at -20°C. Avoid repeated freeze / thaw cycles.