

Manufacturer/Supplier:

WUXI DONGLIN SCI&TECH DEVELOPMENT CO., LTD

Address: A1-203 Mingpin CityII, No.8 Xihudong Road, Liangxi District
Wuxi Jiangsu Province, China

TELE: 86-510-82732223

FAX: 86-510-82720101-8014

Web : www.dldevelop.com

Email: info@dldevelop.com.cn service@dldevelop.com.cn

Product name: Rabbit anti-Lsh Antibody

Catalog: DL96143A

Synonyms: PASG; SMARCA6; Lymphoid-specific helicase;
Proliferation-associated SNF2-like protein;
SWI/SNF2-related matrix-associated
actin-dependent regulator of chromatin subfamily A
member 6

Immunogen: Recombinant full length protein of human Lsh

Form: Liquid

Concentration: 1mg/mL

Size: 100 ul/50 ul

Host: Rabbit

Reactivity: Human, Mouse, Rat

Application: WB, IF/IC, IP, ChIP

Clonality: Polyclonal

Dilution: WB (1/500 - 1/2000),
IF/IC (1/50 - 1/200), IP (1/50 -
1/200), ChIP (1/20 - 1/100)

Entrez Gene: 3070/15201

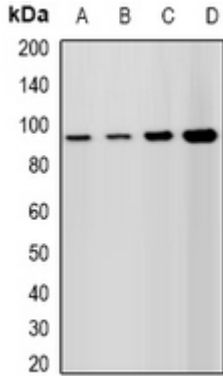
SwissProt: Q9NRZ9/Q60848

Purification: The antibody was purified by immunogen affinity chromatography.

Buffer: Liquid in 0.42% Potassium phosphate, 0.87% Sodium chloride, pH 7.3, 30% glycerol, and 0.01% sodium azide.

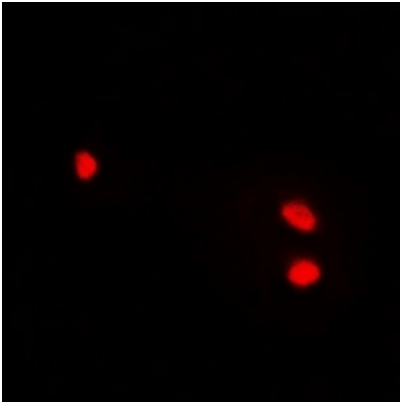
WB description:

Western blot analysis of Lsh expression in A549 (A), HepG2 (B), mouse spleen (C), rat testis (D) whole cell lysates.



IF/ICC description:

Immunofluorescent analysis of Lsh staining in A549 cells. Formalin-fixed cells were permeabilized with 0.1% Triton X-100 in TBS for 5-10 minutes and blocked with 3% BSA-PBS for 30 minutes at room temperature. Cells were probed with the primary antibody in



IP description:

ChIP description:

Storage:

Store at -20°C. Avoid repeated freeze / thaw cycles.