

**Manufacturer/Supplier:**

WUXI DONGLIN SCI&TECH DEVELOPMENT CO., LTD

**Address:** A1-203 Mingpin CityII, No.8 Xihudong Road, Liangxi District  
Wuxi Jiangsu Province, China

**TELE:** 86-510-82732223

**FAX:** 86-510-82720101-8014

**Web :** [www.dldevelop.com](http://www.dldevelop.com)

**Email:** [info@dldevelop.com.cn](mailto:info@dldevelop.com.cn)    [service@dldevelop.com.cn](mailto:service@dldevelop.com.cn)

**Product name:** Rabbit anti-ARP2 Antibody

**Catalog:** DL96121A

**Synonyms:** ARP2; Actin-related protein 2; Actin-like protein 2

**Immunogen:** Recombinant full length protein of human ARP2

**Form:** Liquid

**Concentration:** 1mg/mL

**Size:** 100 ul/50 ul

**Host:** Rabbit

**Reactivity:** Human, Mouse, Rat

**Application:** WB, IHC

**Clonality:** Polyclonal

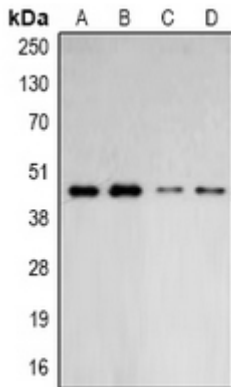
**Dilution:** WB (1/500 - 1/2000),  
IHC (1/50 - 1/200)

**Entrez Gene:** 10097/66713/289820

- SwissProt:** P61160/P61161/Q5M7U6
- Purification:** The antibody was purified by immunogen affinity chromatography.
- Buffer:** Liquid in 0.42% Potassium phosphate, 0.87% Sodium chloride, pH 7.3, 30% glycerol, and 0.01% sodium azide.

**WB description:**

Western blot analysis of ARP2 expression in HepG2 (A), Hela (B), mouse lung (C), mouse brain (D) whole cell lysates.



**IHC description:**

Immunohistochemical analysis of ARP2 staining in human liver cancer formalin fixed paraffin embedded tissue section. The section was

pre-treated using heat mediated antigen retrieval with sodium citrate buffer (pH 6.0). The section was then incubated with the antibody at room temperature and detected using an HRP conjugated compact polymer system. DAB was used as the chromogen. The section was then counterstained with haematoxylin and mounted with DPX.

### Storage:

Store at -20°C. Avoid repeated freeze / thaw cycles.