

**Manufacturer/Supplier:**

WUXI DONGLIN SCI&TECH DEVELOPMENT CO., LTD

**Address:** A1-203 Mingpin CityII, No.8 Xihudong Road, Liangxi District  
Wuxi Jiangsu Province, China

**TELE:** 86-510-82732223

**FAX:** 86-510-82720101-8014

**Web :** [www.dldevelop.com](http://www.dldevelop.com)

**Email:** [info@dldevelop.com.cn](mailto:info@dldevelop.com.cn)    [service@dldevelop.com.cn](mailto:service@dldevelop.com.cn)

**Product name:** Rabbit anti-SH2B1 Antibody

**Catalog:** DL96102A

**Synonyms:** KIAA1299; SH2B; SH2B adapter protein 1;  
Pro-rich, PH and SH2 domain-containing signaling  
mediator; PSM; SH2 domain-containing protein 1B

**Immunogen:** Recombinant full length protein of human SH2B1

**Form:** Liquid

**Concentration:** 1mg/mL

**Size:** 100 ul/50 ul

**Host:** Rabbit

**Reactivity:** Human, Mouse, Rat

**Application:** WB, IF/IC

**Clonality:** Polyclonal

**Dilution:** WB (1/500 - 1/2000),  
IF/IC (1/50 - 1/200)

**Entrez Gene:** 25970/20399/89817

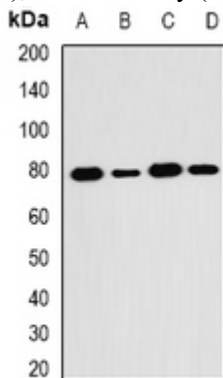
**SwissProt:** Q9NRF2/Q91ZM2/Q62985

**Purification:** The antibody was purified by immunogen affinity chromatography.

**Buffer:** Liquid in 0.42% Potassium phosphate, 0.87% Sodium chloride, pH 7.3, 30% glycerol, and 0.01% sodium azide.

### WB description:

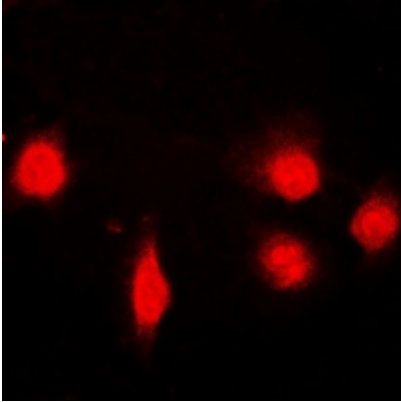
Western blot analysis of SH2B1 expression in HT29 (A), MCF7 (B), mouse kidney (C), mouse brain (D) whole cell lysates.



### IF/ICC description:

Immunofluorescent analysis of SH2B1 staining in U2OS cells.

Formalin-fixed cells were permeabilized with 0.1% Triton X-100 in TBS for 5-10 minutes and blocked with 3% BSA-PBS for 30 minutes at room temperature. Cells were probed with the primary antibody

**Storage:**

Store at -20°C. Avoid repeated freeze / thaw cycles.