

Manufacturer/Supplier:

WUXI DONGLIN SCI&TECH DEVELOPMENT CO., LTD

Address: A1-203 Mingpin CityII, No.8 Xihudong Road, Liangxi District
Wuxi Jiangsu Province, China

TELE: 86-510-82732223

FAX: 86-510-82720101-8014

Web : www.dldevelop.com

Email: info@dldevelop.com.cn service@dldevelop.com.cn

Product name: Rabbit anti-RING1b Antibody

Catalog: DL96101A

Synonyms: BAP1; DING; HIP13; RING1B; E3
ubiquitin-protein ligase RING2;
Huntingtin-interacting protein 2-interacting protein
3; HIP2-interacting protein 3; Protein DinG; RING
finger protein 1B; RING1b; RING finger protein 2;
RING finger protein BAP-1

Immunogen: Recombinant full length protein of human RING1b

Form: Liquid

Concentration: 1mg/mL

Size: 100 ul/50 ul

Host: Rabbit

Reactivity: Human, Mouse, Rat

Application: WB, IHC, IF/IC, IP,

ChIP

Clonality: Polyclonal

Dilution: WB (1/500 - 1/2000),
IHC (1/50 - 1/200), IF/IC (1/50 -
1/200), IP (1/50 - 1/200), ChIP
(1/20 - 1/100)

Entrez Gene: 6045/19821/304850

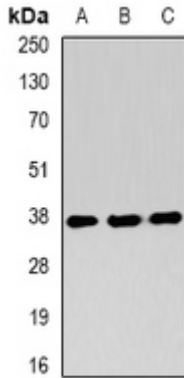
SwissProt: Q99496/Q9CQJ4/Q4KLY4

Purification: The antibody was purified by immunogen affinity chromatography.

Buffer: Liquid in 0.42% Potassium phosphate, 0.87% Sodium chloride, pH 7.3, 30% glycerol, and 0.01% sodium azide.

WB description:

Western blot analysis of RING1b expression in Jurkat (A), SHSY5Y (B), mouse testis (C) whole cell lysates.

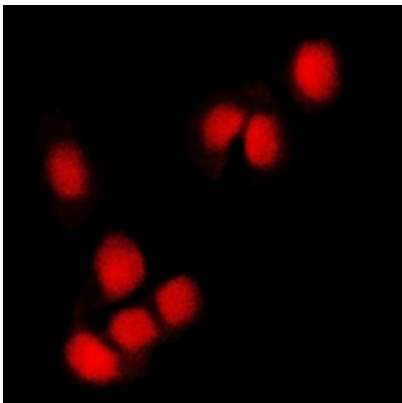


IHC description:

Immunohistochemical analysis of RING1b staining in mouse brain formalin fixed paraffin embedded tissue section. The section was pre-treated using heat mediated antigen retrieval with sodium citrate buffer (pH 6.0). The section was then incubated with the antibody at room temperature and detected using an HRP conjugated compact polymer system. DAB was used as the chromogen. The section was then counterstained with haematoxylin and mounted with DPX.

IF/ICC description:

Immunofluorescent analysis of RING1b staining in U2OS cells. Formalin-fixed cells were permeabilized with 0.1% Triton X-100 in TBS for 5-10 minutes and blocked with 3% BSA-PBS for 30 minutes at room temperature. Cells were probed with the primary antibody



IP description:

ChIP description:

Storage:

Store at -20°C. Avoid repeated freeze / thaw cycles.