

**Manufacturer/Supplier:**

WUXI DONGLIN SCI&TECH DEVELOPMENT CO., LTD

**Address:** A1-203 Mingpin CityII, No.8 Xihudong Road, Liangxi District  
Wuxi Jiangsu Province, China

**TELE:** 86-510-82732223

**FAX:** 86-510-82720101-8014

**Web :** [www.dldevelop.com](http://www.dldevelop.com)

**Email:** [info@dldevelop.com.cn](mailto:info@dldevelop.com.cn)    [service@dldevelop.com.cn](mailto:service@dldevelop.com.cn)

**Product name:** Rabbit anti-PRPF3 Antibody

**Catalog:** DL96083A

**Synonyms:** HPRP3; PRP3; U4/U6 small nuclear  
ribonucleoprotein Prp3; Pre-mRNA-splicing factor  
3; hPrp3; U4/U6 snRNP 90 kDa protein

**Immunogen:** Recombinant full length protein of human PRPF3

**Form:** Liquid

**Concentration:** 1mg/mL

**Size:** 100 ul/50 ul

**Host:** Rabbit

**Reactivity:** Human, Mouse, Rat

**Application:** WB, IHC, IF/IC

**Clonality:** Polyclonal

**Dilution:** WB (1/500 - 1/2000),  
IHC (1/50 - 1/200), IF/IC (1/50 -

1/200)

**Entrez Gene:** 9129/70767

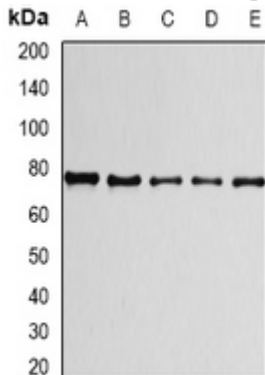
**SwissProt:** O43395/Q922U1

**Purification:** The antibody was purified by immunogen affinity chromatography.

**Buffer:** Liquid in 0.42% Potassium phosphate, 0.87% Sodium chloride, pH 7.3, 30% glycerol, and 0.01% sodium azide.

**WB description:**

Western blot analysis of PRPF3 expression in A549 (A), HepG2 (B), THP1 (C), mouse spleen (D), mouse testis (E) whole cell lysates.

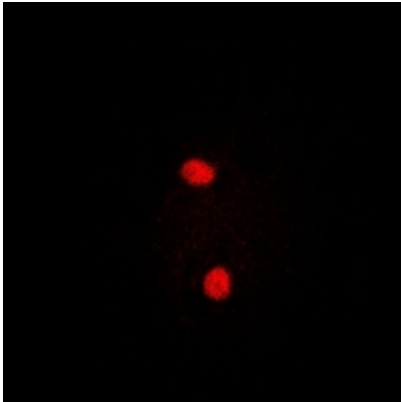


**IHC description:**

Immunohistochemical analysis of PRPF3 staining in human breast cancer formalin fixed paraffin embedded tissue section. The section was pre-treated using heat mediated antigen retrieval with sodium citrate buffer (pH 6.0). The section was then incubated with the antibody at room temperature and detected using an HRP conjugated compact polymer system. DAB was used as the chromogen. The section was then counterstained with haematoxylin and mounted with DPX.

### **IF/ICC description:**

Immunofluorescent analysis of PRPF3 staining in U2OS cells. Formalin-fixed cells were permeabilized with 0.1% Triton X-100 in TBS for 5-10 minutes and blocked with 3% BSA-PBS for 30 minutes at room temperature. Cells were probed with the primary antibody



### **Storage:**

Store at -20°C. Avoid repeated freeze / thaw cycles.