

**Manufacturer/Supplier:**

WUXI DONGLIN SCI&TECH DEVELOPMENT CO., LTD

**Address:** A1-203 Mingpin CityII, No.8 Xihudong Road, Liangxi District  
Wuxi Jiangsu Province, China

**TELE:** 86-510-82732223

**FAX:** 86-510-82720101-8014

**Web :** [www.dldevelop.com](http://www.dldevelop.com)

**Email:** [info@dldevelop.com.cn](mailto:info@dldevelop.com.cn)    [service@dldevelop.com.cn](mailto:service@dldevelop.com.cn)

**Product name:** Rabbit anti-eIF4A1 Antibody

**Catalog:** DL96043A

**Synonyms:** DDX2A; EIF4A; Eukaryotic initiation factor 4A-I;  
eIF-4A-I; eIF4A-I; ATP-dependent RNA helicase  
eIF4A-1

**Immunogen:** Recombinant full length protein of human eIF4A1

**Form:** Liquid

**Concentration:** 1mg/mL

**Size:** 100 ul/50 ul

**Host:** Rabbit

**Reactivity:** Human, Mouse, Rat

**Application:** WB, IF/IC, IP

**Clonality:** Polyclonal

**Dilution:** WB (1/500 - 1/2000),  
IF/IC (1/50 - 1/200), IP (1/20 -

1/50)

**Entrez Gene:** 1973/13681

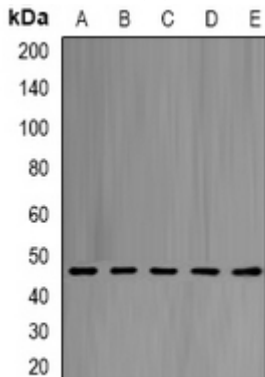
**SwissProt:** P60842/P60843

**Purification:** The antibody was purified by immunogen affinity chromatography.

**Buffer:** Liquid in 0.42% Potassium phosphate, 0.87% Sodium chloride, pH 7.3, 30% glycerol, and 0.01% sodium azide.

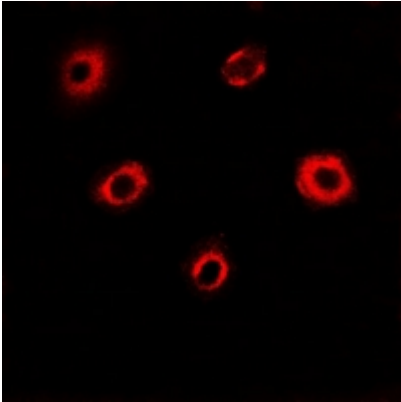
**WB description:**

Western blot analysis of eIF4A1 expression in Hela (A), Jurkat (B), NIH3T3 (C), PC12 (D), mouse liver (E) whole cell lysates.



**IF/ICC description:**

Immunofluorescent analysis of eIF4A1 staining in MCF7 cells. Formalin-fixed cells were permeabilized with 0.1% Triton X-100 in TBS for 5-10 minutes and blocked with 3% BSA-PBS for 30 minutes at room temperature. Cells were probed with the primary antibody



**IP description:**

**Storage:**

Store at -20°C. Avoid repeated freeze / thaw cycles.