

Manufacturer/Supplier:

WUXI DONGLIN SCI&TECH DEVELOPMENT CO., LTD

Address: A1-203 Mingpin CityII, No.8 Xihudong Road, Liangxi District
Wuxi Jiangsu Province, China

TELE: 86-510-82732223

FAX: 86-510-82720101-8014

Web : www.dldevelop.com

Email: info@dldevelop.com.cn service@dldevelop.com.cn

Product name: Rabbit anti-Alpha-tubulin 4a Antibody

Catalog: DL96028A

Synonyms: TUBA1; Tubulin alpha-4A chain; Alpha-tubulin 1;
Testis-specific alpha-tubulin; Tubulin H2-alpha;
Tubulin alpha-1 chain

Immunogen: Recombinant full length protein of human
Alpha-tubulin 4a

Form: Liquid

Concentration: 1mg/mL

Size: 100 ul/50 ul

Host: Rabbit

Reactivity: Human, Mouse, Rat

Application: WB, IHC, IF/IC

Clonality: Polyclonal

Dilution: WB (1/500 - 1/2000),

IHC (1/25 - 1/50), IF/IC (1/25 -
1/100)

Entrez Gene: 7277/22145/316531

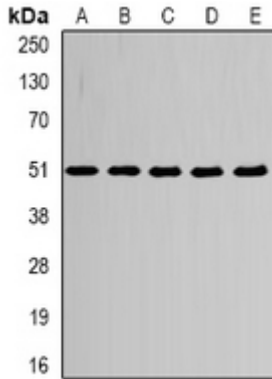
SwissProt: P68366/P68368/Q5XIF6

Purification: The antibody was purified by immunogen affinity chromatography.

Buffer: Liquid in 0.42% Potassium phosphate, 0.87% Sodium chloride, pH 7.3, 30% glycerol, and 0.01% sodium azide.

WB description:

Western blot analysis of Alpha-tubulin 4a expression in HepG2 (A), MCF7 (B), mouse heart (C), mouse brain (D), PC12 (E) whole cell lysates.

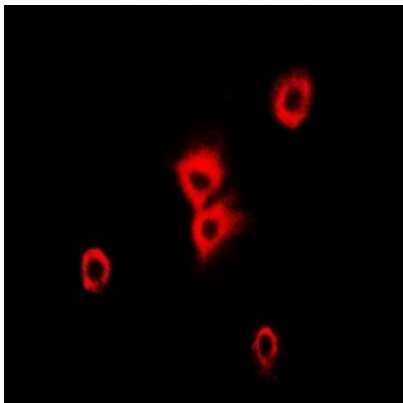


IHC description:

Immunohistochemical analysis of Alpha-tubulin 4a staining in human lung cancer formalin fixed paraffin embedded tissue section. The section was pre-treated using heat mediated antigen retrieval with sodium citrate buffer (pH 6.0). The section was then incubated with the antibody at room temperature and detected using an HRP conjugated compact polymer system. DAB was used as the chromogen. The section was then counterstained with haematoxylin and mounted with DPX.

IF/ICC description:

Immunofluorescent analysis of Alpha-tubulin 4a staining in Hela cells. Formalin-fixed cells were permeabilized with 0.1% Triton X-100 in TBS for 5-10 minutes and blocked with 3% BSA-PBS for 30 minutes at room temperature. Cells were probed with the primar



Storage:

Store at -20°C. Avoid repeated freeze / thaw cycles.