

**Manufacturer/Supplier:**

WUXI DONGLIN SCI&TECH DEVELOPMENT CO., LTD

**Address:** A1-203 Mingpin CityII, No.8 Xihudong Road, Liangxi District  
Wuxi Jiangsu Province, China

TELE: 86-510-82732223

FAX: 86-510-82720101-8014

**Web :** [www.dldevelop.com](http://www.dldevelop.com)

Email: [info@dldevelop.com.cn](mailto:info@dldevelop.com.cn)    [service@dldevelop.com.cn](mailto:service@dldevelop.com.cn)

**Product name:** Rabbit anti-SNF2H Antibody

**Catalog:** DL95969A

**Synonyms:** SNF2H; WCRF135; SWI/SNF-related  
matrix-associated actin-dependent regulator of  
chromatin subfamily A member 5; SWI/SNF-related  
matrix-associated actin-dependent regulator of  
chromatin A5; Sucrose nonfermenting protein 2  
homolog; hSNF2H

**Immunogen:** Recombinant full length protein of human SNF2H

**Form:** Liquid

**Concentration:** 1mg/mL

**Size:** 100 ul/50 ul

**Host:** Rabbit

**Reactivity:** Human, Mouse, Rat

**Application:** WB, IF/IC, IP, ChIP

**Clonality:** Polyclonal

**Dilution:** WB (1/500 - 1/2000),  
IF/IC (1/50 - 1/200), IP (1/50 -  
1/200), ChIP (1/20 - 1/100)

**Entrez Gene:** 8467/93762

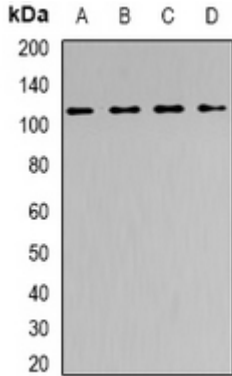
**SwissProt:** O60264/Q91ZW3

**Purification:** The antibody was purified by immunogen affinity chromatography.

**Buffer:** Liquid in 0.42% Potassium phosphate, 0.87% Sodium chloride, pH 7.3, 30% glycerol, and 0.01% sodium azide.

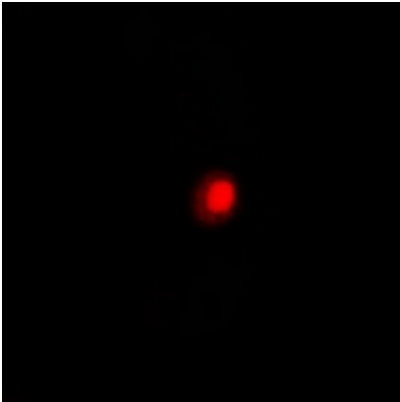
**WB description:**

Western blot analysis of SNF2H expression in PC3 (A), HepG2 (B), mouse spleen (C), mouse brain (D) whole cell lysates.



### IF/ICC description:

Immunofluorescent analysis of SNF2H staining in Hela cells. Formalin-fixed cells were permeabilized with 0.1% Triton X-100 in TBS for 5-10 minutes and blocked with 3% BSA-PBS for 30 minutes at room temperature. Cells were probed with the primary antibody



### IP description:

**ChIP description:**

**Storage:**

Store at -20°C. Avoid repeated freeze / thaw cycles.