

Manufacturer/Supplier:

WUXI DONGLIN SCI&TECH DEVELOPMENT CO., LTD

Address: A1-203 Mingpin CityII, No.8 Xihudong Road, Liangxi District
Wuxi Jiangsu Province, China

TELE: 86-510-82732223

FAX: 86-510-82720101-8014

Web : www.dldevelop.com

Email: info@dldevelop.com.cn service@dldevelop.com.cn

Product name: Rabbit anti-GLUR6 Antibody

Catalog: DL95960A

Synonyms: GLUR6; Glutamate receptor ionotropic, kainate 2;
GluK2; Excitatory amino acid receptor 4; EAA4;
Glutamate receptor 6; GluR-6; GluR6

Immunogen: Recombinant full length protein of human GLUR6

Form: Liquid

Concentration: 1mg/mL

Size: 100 ul/50 ul

Host: Rabbit

Reactivity: Human, Mouse, Rat

Application: WB, IF/IC

Clonality: Polyclonal

Dilution: WB (1/500 - 1/2000),
IF/IC (1/50 - 1/200)

Entrez Gene: 2898/14806/54257

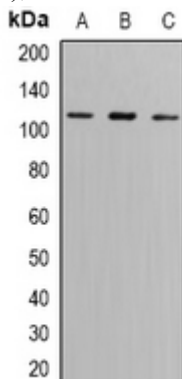
SwissProt: Q13002/P39087/P42260

Purification: The antibody was purified by immunogen affinity chromatography.

Buffer: Liquid in 0.42% Potassium phosphate, 0.87% Sodium chloride, pH 7.3, 30% glycerol, and 0.01% sodium azide.

WB description:

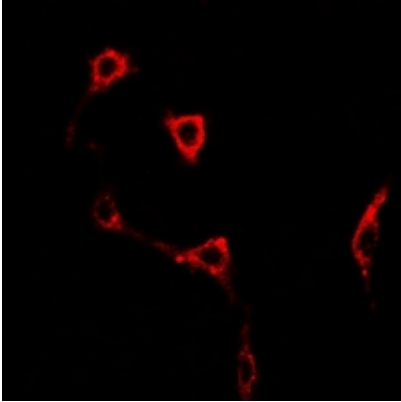
Western blot analysis of GLUR6 expression in SW620 (A), A549 (B), mouse brain (C) whole cell lysates.



IF/ICC description:

Immunofluorescent analysis of GLUR6 staining in U2OS cells.

Formalin-fixed cells were permeabilized with 0.1% Triton X-100 in TBS for 5-10 minutes and blocked with 3% BSA-PBS for 30 minutes at room temperature. Cells were probed with the primary antibody



Storage:

Store at -20°C. Avoid repeated freeze / thaw cycles.