

Manufacturer/Supplier:

WUXI DONGLIN SCI&TECH DEVELOPMENT CO., LTD

Address: A1-203 Mingpin CityII, No.8 Xihudong Road, Liangxi District
Wuxi Jiangsu Province, China

TELE: 86-510-82732223

FAX: 86-510-82720101-8014

Web : www.dldevelop.com

Email: info@dldevelop.com.cn service@dldevelop.com.cn

Product name: Rabbit anti-ANT1 Antibody

Catalog: DL95950A

Synonyms: ANT1; ADP/ATP translocase 1; ADP,ATP carrier protein 1; ADP,ATP carrier protein, heart/skeletal muscle isoform T1; Adenine nucleotide translocator 1; ANT 1; Solute carrier family 25 member 4

Immunogen: Recombinant full length protein of human ANT1

Form: Liquid

Concentration: 1mg/mL

Size: 100 ul/50 ul

Host: Rabbit

Reactivity: Human, Mouse, Rat

Application: WB, IHC

Clonality: Polyclonal

Dilution: WB (1/500 - 1/2000),

IHC (1/50 - 1/200)

Entrez Gene: 291/11739/85333

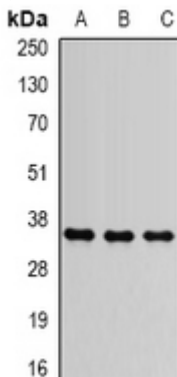
SwissProt: P12235/P48962/Q05962

Purification: The antibody was purified by immunogen affinity chromatography.

Buffer: Liquid in 0.42% Potassium phosphate, 0.87% Sodium chloride, pH 7.3, 30% glycerol, and 0.01% sodium azide.

WB description:

Western blot analysis of ANT1 expression in SW620 (A), HepG2 (B), mouse brain (C) whole cell lysates.



IHC description:

Immunohistochemical analysis of ANT1 staining in rat heart formalin fixed paraffin embedded tissue section. The section was pre-treated using heat mediated antigen retrieval with sodium citrate buffer (pH 6.0). The section was then incubated with the antibody at room temperature and detected using an HRP conjugated compact polymer system. DAB was used as the chromogen. The section was then counterstained with haematoxylin and mounted with DPX.

Storage:

Store at -20°C. Avoid repeated freeze / thaw cycles.