

**Manufacturer/Supplier:**

WUXI DONGLIN SCI&TECH DEVELOPMENT CO., LTD

**Address:** A1-203 Mingpin CityII, No.8 Xihudong Road, Liangxi District  
Wuxi Jiangsu Province, China

TELE: 86-510-82732223

FAX: 86-510-82720101-8014

**Web :** [www.dldevelop.com](http://www.dldevelop.com)

Email: [info@dldevelop.com.cn](mailto:info@dldevelop.com.cn)    [service@dldevelop.com.cn](mailto:service@dldevelop.com.cn)

**Product name:** Rabbit anti-CES1 Antibody

**Catalog:** DL95948A

**Synonyms:** CES2; SES1; Liver carboxylesterase 1;  
Acyl-coenzyme A:cholesterol acyltransferase;  
ACAT; Brain carboxylesterase hBr1;  
Carboxylesterase 1; CE-1; hCE-1; Cocaine  
carboxylesterase; Egasyn; HMSE;  
Methylumbelliferyl-acetate deacetylase 1;  
Monocyte/macrophage se

**Immunogen:** Recombinant full length protein of human CES1

**Form:** Liquid

**Concentration:** 1mg/mL

**Size:** 100 ul/50 ul

**Host:** Rabbit

**Reactivity:** Human, Mouse, Rat

**Application:** WB, IHC

**Clonality:** Polyclonal

**Dilution:** WB (1/500 - 1/2000),  
IHC (1/50 - 1/200)

**Entrez Gene:** 1066/12623

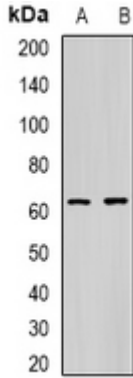
**SwissProt:** P23141/Q8VCC2

**Purification:** The antibody was purified by immunogen affinity chromatography.

**Buffer:** Liquid in 0.42% Potassium phosphate, 0.87% Sodium chloride, pH 7.3, 30% glycerol, and 0.01% sodium azide.

**WB description:**

Western blot analysis of CES1 expression in A549 (A), mouse liver (B) whole cell lysates.



### IHC description:

Immunohistochemical analysis of CES1 staining in human liver cancer formalin fixed paraffin embedded tissue section. The section was pre-treated using heat mediated antigen retrieval with sodium citrate buffer (pH 6.0). The section was then incubated with the antibody at room temperature and detected using an HRP conjugated compact polymer system. DAB was used as the chromogen. The section was then counterstained with haematoxylin and mounted with DPX.

### Storage:

Store at -20°C. Avoid repeated freeze / thaw cycles.