

Manufacturer/Supplier:

WUXI DONGLIN SCI&TECH DEVELOPMENT CO., LTD

Address: A1-203 Mingpin CityII, No.8 Xihudong Road, Liangxi District
Wuxi Jiangsu Province, China

TELE: 86-510-82732223

FAX: 86-510-82720101-8014

Web : www.dldevelop.com

Email: info@dldevelop.com.cn service@dldevelop.com.cn

Product name: Rabbit anti-TAP2 Antibody

Catalog: DL95925A

Synonyms: ABCB3; PSF2; RING11; Y1; Antigen peptide transporter 2; APT2; ATP-binding cassette sub-family B member 3; Peptide supply factor 2; Peptide transporter PSF2; PSF-2; Peptide transporter TAP2; Peptide transporter involved in antigen processing 2; Really inte

Immunogen: Recombinant full length protein of human TAP2

Form: Liquid

Concentration: 1mg/mL

Size: 100 ul/50 ul

Host: Rabbit

Reactivity: Human, Mouse, Rat

Application: WB, IF/IC

Clonality: Polyclonal

Dilution: WB (1/500 - 1/2000),
IF/IC (1/50 - 1/200)

Entrez Gene: 6891/21355/24812

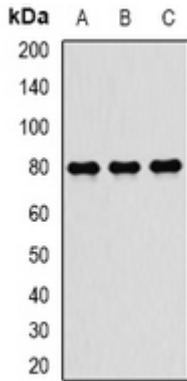
SwissProt: Q03519/P36371/P36372

Purification: The antibody was purified by immunogen affinity chromatography.

Buffer: Liquid in 0.42% Potassium phosphate, 0.87% Sodium chloride, pH 7.3, 30% glycerol, and 0.01% sodium azide.

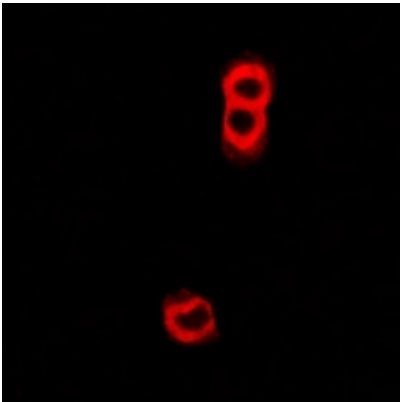
WB description:

Western blot analysis of TAP2 expression in MCF7 (A), mouse spleen (B), mouse lung (C) whole cell lysates.



IF/ICC description:

Immunofluorescent analysis of TAP2 staining in U2OS cells. Formalin-fixed cells were permeabilized with 0.1% Triton X-100 in TBS for 5-10 minutes and blocked with 3% BSA-PBS for 30 minutes at room temperature. Cells were probed with the primary antibody i



Storage:



Store at -20°C. Avoid repeated freeze / thaw cycles.