

Manufacturer/Supplier:

WUXI DONGLIN SCI&TECH DEVELOPMENT CO., LTD

Address: A1-203 Mingpin CityII, No.8 Xihudong Road, Liangxi District
Wuxi Jiangsu Province, China

TELE: 86-510-82732223

FAX: 86-510-82720101-8014

Web : www.dldevelop.com

Email: info@dldevelop.com.cn service@dldevelop.com.cn

Product name: Rabbit anti-RbAp48 Antibody

Catalog: DL95917A

Synonyms: RBAP48; Histone-binding protein RBBP4;
Chromatin assembly factor 1 subunit C; CAF-1
subunit C; Chromatin assembly factor I p48 subunit;
CAF-I 48 kDa subunit; CAF-I p48;
Nucleosome-remodeling factor subunit RBAP48;
Retinoblastoma-binding protein 4; RBBP-4;

Immunogen: Recombinant full length protein of human RbAp48

Form: Liquid

Concentration: 1mg/mL

Size: 100 ul/50 ul

Host: Rabbit

Reactivity: Human, Mouse, Rat

Application: WB, IHC, IF/IC, IP,

ChIP

Clonality: Polyclonal

Dilution: WB (1/500 - 1/2000),
IHC (1/50 - 1/200), IF/IC (1/50 -
1/200), IP (1/50 - 1/200), ChIP
(1/20 - 1/100)

Entrez Gene: 5928/19646

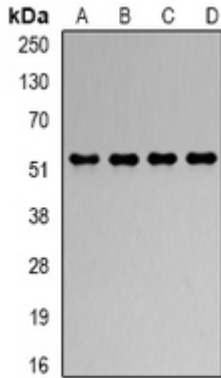
SwissProt: Q09028/Q60972

Purification: The antibody was purified by immunogen affinity chromatography.

Buffer: Liquid in 0.42% Potassium phosphate, 0.87% Sodium chloride, pH 7.3, 30% glycerol, and 0.01% sodium azide.

WB description:

Western blot analysis of RbAp48 expression in Hela (A), Jurkat (B), NIH3T3 (C), COS7 (D) whole cell lysates.

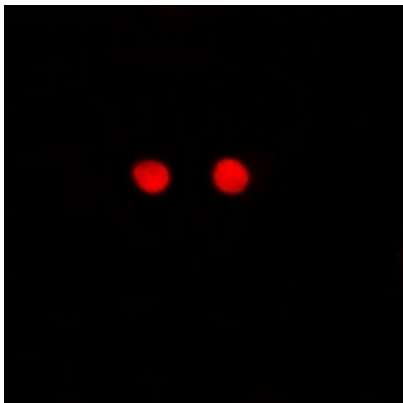


IHC description:

Immunohistochemical analysis of RbAp48 staining in mouse lung formalin fixed paraffin embedded tissue section. The section was pre-treated using heat mediated antigen retrieval with sodium citrate buffer (pH 6.0). The section was then incubated with the antibody at room temperature and detected using an HRP conjugated compact polymer system. DAB was used as the chromogen. The section was then counterstained with haematoxylin and mounted with DPX.

IF/ICC description:

Immunofluorescent analysis of RbAp48 staining in MCF7 cells. Formalin-fixed cells were permeabilized with 0.1% Triton X-100 in TBS for 5-10 minutes and blocked with 3% BSA-PBS for 30 minutes at room temperature. Cells were probed with the primary antibody



IP description:

ChIP description:

Storage:

Store at -20°C. Avoid repeated freeze / thaw cycles.