

**Manufacturer/Supplier:**

WUXI DONGLIN SCI&TECH DEVELOPMENT CO., LTD

**Address:** A1-203 Mingpin CityII, No.8 Xihudong Road. Liangxi District  
Wuxi Jiangsu Province, China

TELE: 86-510-82732223

FAX: 86-510-82720101-8014

**Web :** [www.dldevelop.com](http://www.dldevelop.com)

Email: [info@dldevelop.com.cn](mailto:info@dldevelop.com.cn)    [service@dldevelop.com.cn](mailto:service@dldevelop.com.cn)

**Product name:** Rabbit anti-Alpha-enolase Antibody

**Catalog:** DL95881A

**Synonyms:** ENO1L1; MBPB1; MPB1; Alpha-enolase;  
2-phospho-D-glycerate hydro-lyase; C-myc  
promoter-binding protein; Enolase 1; MBP-1;  
MPB-1; Non-neural enolase; NNE;  
Phosphopyruvate hydratase; Plasminogen-binding  
protein

**Immunogen:** Recombinant full length protein of human  
Alpha-enolase

**Form:** Liquid

**Concentration:** 1mg/mL

**Size:** 100 ul/50 ul

**Host:** Rabbit

**Reactivity:** Human, Mouse, Rat

**Application:** WB, IF/IC

**Clonality:** Polyclonal

**Dilution:** WB (1/500 - 1/2000),  
IF/IC (1/20 - 1/100)

**Entrez Gene:** 2023/13806; 433182/24333

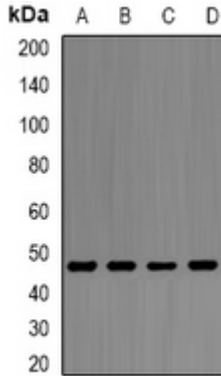
**SwissProt:** P06733/P17182/P04764

**Purification:** The antibody was purified by immunogen affinity chromatography.

**Buffer:** Liquid in 0.42% Potassium phosphate, 0.87% Sodium chloride, pH 7.3, 30% glycerol, and 0.01% sodium azide.

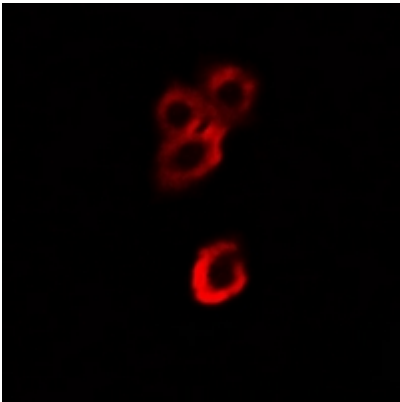
**WB description:**

Western blot analysis of Alpha-enolase expression in PC3 (A), Ramos (B), Hela (C), THP1 (D) whole cell lysates.



### IF/ICC description:

Immunofluorescent analysis of Alpha-enolase staining in HeLa cells. Formalin-fixed cells were permeabilized with 0.1% Triton X-100 in TBS for 5-10 minutes and blocked with 3% BSA-PBS for 30 minutes at room temperature. Cells were probed with the primary a



### Storage:



Store at -20°C. Avoid repeated freeze / thaw cycles.