

**Manufacturer/Supplier:**

WUXI DONGLIN SCI&TECH DEVELOPMENT CO., LTD

**Address:** A1-203 Mingpin CityII, No.8 Xihudong Road, Liangxi District  
Wuxi Jiangsu Province, China

TELE: 86-510-82732223

FAX: 86-510-82720101-8014

**Web :** [www.dldevelop.com](http://www.dldevelop.com)

Email: [info@dldevelop.com.cn](mailto:info@dldevelop.com.cn)    [service@dldevelop.com.cn](mailto:service@dldevelop.com.cn)

**Product name:** Rabbit anti-EEF1A1 Antibody

**Catalog:** DL95877A

**Synonyms:** EEF1A; EF1A; LENG7; Elongation factor 1-alpha  
1; EF-1-alpha-1; Elongation factor Tu; EF-Tu;  
Eukaryotic elongation factor 1 A-1; eEF1A-1;  
Leukocyte receptor cluster member 7

**Immunogen:** Recombinant full length protein of human EEF1A1

**Form:** Liquid

**Concentration:** 1mg/mL

**Size:** 100 ul/50 ul

**Host:** Rabbit

**Reactivity:** Human, Mouse, Rat

**Application:** WB, IF/IC

**Clonality:** Polyclonal

**Dilution:** WB (1/500 - 1/2000),

IF/IC (1/20 - 1/100)

**Entrez Gene:** 1915/13627/171361

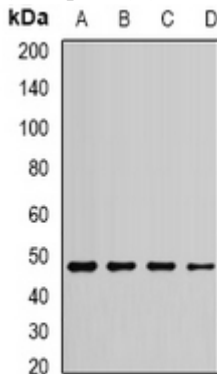
**SwissProt:** P68104/P10126/P62630

**Purification:** The antibody was purified by immunogen affinity chromatography.

**Buffer:** Liquid in 0.42% Potassium phosphate, 0.87% Sodium chloride, pH 7.3, 30% glycerol, and 0.01% sodium azide.

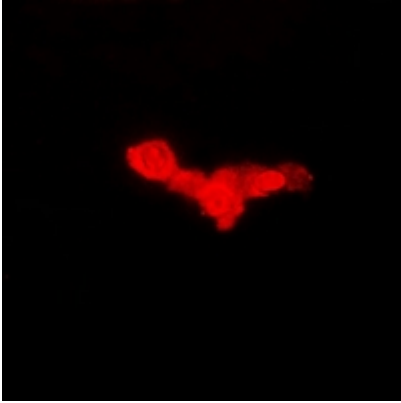
**WB description:**

Western blot analysis of EEF1A1 expression in MCF7 (A), Jurkat (B), HepG2 (C), SHSY5Y (D) whole cell lysates.



**IF/ICC description:**

Immunofluorescent analysis of EEF1A1 staining in Hela cells. Formalin-fixed cells were permeabilized with 0.1% Triton X-100 in TBS for 5-10 minutes and blocked with 3% BSA-PBS for 30 minutes at room temperature. Cells were probed with the primary antibody



**Storage:**

Store at -20°C. Avoid repeated freeze / thaw cycles.