

**Manufacturer/Supplier:**

WUXI DONGLIN SCI&TECH DEVELOPMENT CO., LTD

**Address:** A1-203 Mingpin CityII, No.8 Xihudong Road, Liangxi District  
Wuxi Jiangsu Province, China

TELE: 86-510-82732223

FAX: 86-510-82720101-8014

**Web :** [www.dldevelop.com](http://www.dldevelop.com)

Email: [info@dldevelop.com.cn](mailto:info@dldevelop.com.cn)    [service@dldevelop.com.cn](mailto:service@dldevelop.com.cn)

**Product name:** Rabbit anti-HSP60 Antibody

**Catalog:** DL95737A

**Synonyms:** HSP60; 60 kDa heat shock protein mitochondrial;  
60 kDa chaperonin; Chaperonin 60; CPN60; Heat  
shock protein 60; HSP-60; Hsp60; HuCHA60;  
Mitochondrial matrix protein P1; P60 lymphocyte  
protein

**Immunogen:** Recombinant protein corresponding to human  
HSP60.

**Form:** Liquid

**Concentration:** 1mg/mL

**Size:** 100 ul/50 ul

**Host:** Rabbit

**Reactivity:** Human, Mouse, Rat

**Application:** WB, IHC

**Clonality:** Polyclonal

**Dilution:** WB (1/1000 - 1/2000),  
IHC (1/200 - 1/500)

**Entrez Gene:** 3329

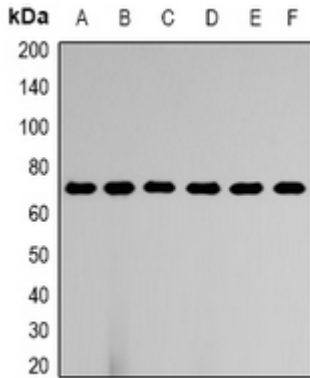
**SwissProt:** P10809

**Purification:** The antibody was purified by immunogen affinity chromatography.

**Buffer:** Liquid in 0.42% Potassium phosphate, 0.87% Sodium chloride, pH 7.3, 30% glycerol, and 0.01% sodium azide.

**WB description:**

Western blot analysis of HSP60 expression in Hela (A), NIH3T3 (B), mouse brain (C), rat brain (D) whole cell lysates.



### IHC description:

Immunohistochemical analysis of HSP60 staining in mouse kidney formalin fixed paraffin embedded tissue section. The section was pre-treated using heat mediated antigen retrieval with sodium citrate buffer (pH 6.0). The section was then incubated with the antibody at room temperature and detected using an HRP conjugated compact polymer system. DAB was used as the chromogen. The section was then counterstained with haematoxylin and mounted with DPX.

### Storage:

Store at -20°C. Avoid repeated freeze / thaw cycles.