

**Manufacturer/Supplier:**

WUXI DONGLIN SCI&TECH DEVELOPMENT CO., LTD

**Address:** A1-203 Mingpin CityII, No.8 Xihudong Road, Liangxi District  
Wuxi Jiangsu Province, China

**TELE:** 86-510-82732223

**FAX:** 86-510-82720101-8014

**Web :** [www.dldevelop.com](http://www.dldevelop.com)

**Email:** [info@dldevelop.com.cn](mailto:info@dldevelop.com.cn)    [service@dldevelop.com.cn](mailto:service@dldevelop.com.cn)

**Product name:** Rabbit anti-Histone H4 (pS1) Antibody

**Catalog:** DL95728A

**Synonyms:** H4/A; H4FA; H4/I; H4FI; H4/G; H4FG; H4/B;  
H4FB; H4/J; H4FJ; H4/C; H4FC; H4/H; H4FH;  
H4/M; H4FM; H4/E; H4FE; H4/D; H4FD; H4/K;  
H4FK; H4/N; H4F2; H4FN; HIST2H4; H4/O;  
H4FO; Histone H4

**Immunogen:** KLH-conjugated synthetic peptide encompassing a  
sequence of human Histone H4. The exact sequence  
is proprietary.

**Form:** Liquid

**Concentration:** 1mg/mL

**Size:** 100 ul/50 ul

**Host:** Rabbit

**Reactivity:** Human, Mouse, Rat

**Application:** WB, IHC

**Clonality:** Polyclonal

**Dilution:** WB (1/1000 - 1/2000),  
IHC (1/100 - 1/200)

**Entrez Gene:** 121504/100041230/100360950

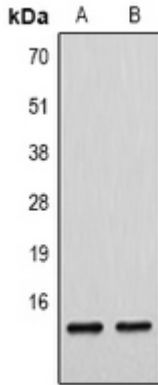
**SwissProt:** P62805/P62806/P62804

**Purification:** The antibody was purified by immunogen affinity chromatography.

**Buffer:** Liquid in 0.42% Potassium phosphate, 0.87% Sodium chloride, pH 7.3, 30% glycerol, and 0.01% sodium azide.

**WB description:**

Western blot analysis of Histone H4 (pS1) expression in Hela Nocodazole-treated (A) whole cell lysates.



### IHC description:

Immunohistochemical analysis of Histone H4 (pS1) staining in human breast cancer formalin fixed paraffin embedded tissue section. The section was pre-treated using heat mediated antigen retrieval with sodium citrate buffer (pH 6.0). The section was then incubated with the antibody at room temperature and detected using an HRP conjugated compact polymer system. DAB was used as the chromogen. The section was then counterstained with haematoxylin and mounted with DPX.

### Storage:

Store at -20°C. Avoid repeated freeze / thaw cycles.