

**Manufacturer/Supplier:**

WUXI DONGLIN SCI&TECH DEVELOPMENT CO., LTD

**Address:** A1-203 Mingpin CityII, No.8 Xihudong Road, Liangxi District  
Wuxi Jiangsu Province, China

TELE: 86-510-82732223

FAX: 86-510-82720101-8014

**Web :** [www.dldevelop.com](http://www.dldevelop.com)

Email: [info@dldevelop.com.cn](mailto:info@dldevelop.com.cn) [service@dldevelop.com.cn](mailto:service@dldevelop.com.cn)

**Product name:** Rabbit anti-Histone H3 (MonoMethyl R26)  
Antibody

**Catalog:** DL95701A

**Synonyms:** HIST1H3A; H3FA; HIST1H3B; H3FL;  
HIST1H3C; H3FC; HIST1H3D; H3FB;  
HIST1H3E; H3FD; HIST1H3F; H3FI; HIST1H3G;  
H3FH; HIST1H3H; H3FK; HIST1H3I; H3FF;  
HIST1H3J; H3FJ; Histone H3.1; Histone H3/a;  
Histone H3/b; Histone H3/c; Histone H3/d; Histone  
H3/f; Histone H3/

**Immunogen:** KLH-conjugated synthetic peptide encompassing a  
sequence of human Histone H3. The exact sequence  
is proprietary.

**Form:** Liquid

**Concentration:** 1mg/mL

**Size:** 100 ul/50 ul

**Host:** Rabbit

**Reactivity:** Human, Mouse

**Application:** WB, IHC

**Clonality:** Polyclonal

**Dilution:** WB (1/500 - 1/1000),  
IHC (1/100 - 1/200)

**Entrez Gene:** 319152; 15077; 15078

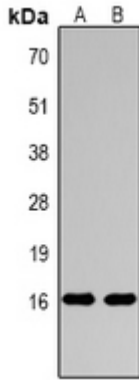
**SwissProt:** P68431; Q71DI3; P84243/P68433; P84228; P84244

**Purification:** The antibody was purified by immunogen affinity chromatography.

**Buffer:** Liquid in 0.42% Potassium phosphate, 0.87% Sodium chloride, pH 7.3, 30% glycerol, and 0.01% sodium azide.

**WB description:**

Western blot analysis of Histone H3 (MonoMethyl R26) expression in Hela (A), NIH3T3 (B) whole cell lysates.



### IHC description:

Immunohistochemical analysis of Histone H3 (MonoMethyl R26) staining in human breast cancer formalin fixed paraffin embedded tissue section. The section was pre-treated using heat mediated antigen retrieval with sodium citrate buffer (pH 6.0). The section was then incubated with the antibody at room temperature and detected using an HRP conjugated compact polymer system. DAB was used as the chromogen. The section was then counterstained with haematoxylin and mounted with DPX.

### Storage:

Store at -20°C. Avoid repeated freeze / thaw cycles.