

Manufacturer/Supplier:

WUXI DONGLIN SCI&TECH DEVELOPMENT CO., LTD

Address: A1-203 Mingpin CityII, No.8 Xihudong Road, Liangxi District
Wuxi Jiangsu Province, China

TELE: 86-510-82732223

FAX: 86-510-82720101-8014

Web : www.dldevelop.com

Email: info@dldevelop.com.cn service@dldevelop.com.cn

Product name: Rabbit anti-Histone H3 (DiMethyl K36) Antibody

Catalog: DL95690A

Synonyms: HIST1H3A; H3FA; HIST1H3B; H3FL;
HIST1H3C; H3FC; HIST1H3D; H3FB;
HIST1H3E; H3FD; HIST1H3F; H3FI; HIST1H3G;
H3FH; HIST1H3H; H3FK; HIST1H3I; H3FF;
HIST1H3J; H3FJ; Histone H3.1; Histone H3/a;
Histone H3/b; Histone H3/c; Histone H3/d; Histone
H3/f; Histone H3/

Immunogen: KLH-conjugated synthetic peptide encompassing a
sequence of human Histone H3. The exact sequence
is proprietary.

Form: Liquid

Concentration: 1mg/mL

Size: 100 ul/50 ul

Host: Rabbit

Reactivity: Human, Mouse, Rat

Application: WB, IHC

Clonality: Polyclonal

Dilution: WB (1/500 - 1/1000),
IHC (1/200 - 1/500)

Entrez Gene: 319152; 15077; 15078/291159; 100361558

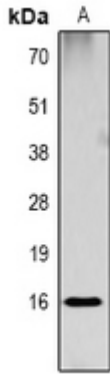
SwissProt: P68431; Q71DI3; P84243/P68433; P84228;
P84244/Q6LED0; P84245

Purification: The antibody was purified by immunogen affinity chromatography.

Buffer: Liquid in 0.42% Potassium phosphate, 0.87% Sodium chloride, pH 7.3, 30% glycerol, and 0.01% sodium azide.

WB description:

Western blot analysis of Histone H3 (DiMethyl K36) expression in HeLa (A), NIH3T3 (B), rat liver (C) whole cell lysates.



IHC description:

Immunohistochemical analysis of Histone H3 (DiMethyl K36) staining in human breast cancer formalin fixed paraffin embedded tissue section. The section was pre-treated using heat mediated antigen retrieval with sodium citrate buffer (pH 6.0). The section was then incubated with the antibody at room temperature and detected using an HRP conjugated compact polymer system. DAB was used as the chromogen. The section was then counterstained with haematoxylin and mounted with DPX.

Storage:

Store at -20°C. Avoid repeated freeze / thaw cycles.