

Manufacturer/Supplier:

WUXI DONGLIN SCI&TECH DEVELOPMENT CO., LTD

Address: A1-203 Mingpin CityII, No.8 Xihudong Road, Liangxi District
Wuxi Jiangsu Province, China

TELE: 86-510-82732223

FAX: 86-510-82720101-8014

Web : www.dldevelop.com

Email: info@dldevelop.com.cn service@dldevelop.com.cn

Product name: Rabbit anti-Histone H2B (DiMethyl K43) Antibody

Catalog: DL95669A

Synonyms: HIST1H2BA; TSH2B; Histone H2B type 1-A;
Histone H2B testis; Testis-specific histone H2B;
HIST1H2BB; H2BFF; Histone H2B type 1-B;
Histone H2B.1; Histone H2B.f; H2B/f;
HIST1H2BC; H2BFL; HIST1H2BE; H2BFH;
HIST1H2BF; H2BFG; HIST1H2BG; H2BFA;
HIST1H2BI; H2BFK;

Immunogen: KLH-conjugated synthetic peptide encompassing a
sequence of human Histone H2B. The exact
sequence is proprietary.

Form: Liquid

Concentration: 1mg/mL

Size: 100 ul/50 ul

Host: Rabbit

Reactivity: Human, Mouse, Rat

Application: WB, IHC

Clonality: Polyclonal

Dilution: WB (1/500 - 1/1000),
IHC (1/100 - 1/200)

Entrez Gene: 319177; 319178; 319179/24829

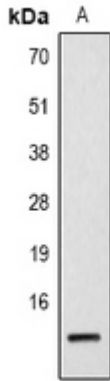
SwissProt: Q96A08; P33778; P62807/P70696; Q64475;
Q6ZWW9/Q00729

Purification: The antibody was purified by immunogen affinity chromatography.

Buffer: Liquid in 0.42% Potassium phosphate, 0.87% Sodium chloride, pH 7.3, 30% glycerol, and 0.01% sodium azide.

WB description:

Western blot analysis of Histone H2B (DiMethyl K43) expression in Hela (A), NIH3T3 (B) whole cell lysates.



IHC description:

Immunohistochemical analysis of Histone H2B (DiMethyl K43) staining in human breast cancer formalin fixed paraffin embedded tissue section. The section was pre-treated using heat mediated antigen retrieval with sodium citrate buffer (pH 6.0). The section was then incubated with the antibody at room temperature and detected using an HRP conjugated compact polymer system. DAB was used as the chromogen. The section was then counterstained with haematoxylin and mounted with DPX.

Storage:

Store at -20°C. Avoid repeated freeze / thaw cycles.