

Manufacturer/Supplier:

WUXI DONGLIN SCI&TECH DEVELOPMENT CO., LTD

Address: A1-203 Mingpin CityII, No.8 Xihudong Road, Liangxi District
Wuxi Jiangsu Province, China

TELE: 86-510-82732223

FAX: 86-510-82720101-8014

Web : www.dldevelop.com

Email: info@dldevelop.com.cn service@dldevelop.com.cn

Product name: Rabbit anti-Histone H1 (pT17) Antibody

Catalog: DL95648A

Synonyms: HIST1H1A; H1F1; Histone H1.1; Histone H1a;
HIST1H1C; H1F2; Histone H1.2; Histone H1c;
Histone H1d; Histone H1s-1; HIST1H1D; H1F3;
Histone H1.3; Histone H1c; Histone H1s-2;
HIST1H1E; H1F4; Histone H1.4; Histone H1b;
Histone H1s-4

Immunogen: KLH-conjugated synthetic peptide encompassing a
sequence of human Histone H1. The exact sequence
is proprietary.

Form: Liquid

Concentration: 1mg/mL

Size: 100 ul/50 ul

Host: Rabbit

Reactivity: Human, Mouse, Rat

Application: WB, IHC

Clonality: Polyclonal

Dilution: WB (1/1000 - 1/2000),
IHC (1/200 - 1/500)

Entrez Gene: 80838; 50708; 14957; 50709/291145; 201097

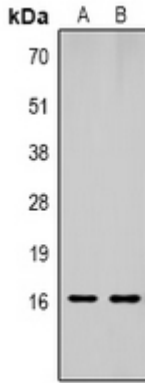
SwissProt: Q02539; P16403; P16402; P10412/P43275;
P15864; P43277; P43274/D4A3K5; P15865

Purification: The antibody was purified by immunogen affinity chromatography.

Buffer: Liquid in 0.42% Potassium phosphate, 0.87% Sodium chloride, pH 7.3, 30% glycerol, and 0.01% sodium azide.

WB description:

Western blot analysis of Histone H1 (pT17) expression in Hela (A) whole cell lysates.



IHC description:

Immunohistochemical analysis of Histone H1 (pT17) staining in human breast cancer formalin fixed paraffin embedded tissue section. The section was pre-treated using heat mediated antigen retrieval with sodium citrate buffer (pH 6.0). The section was then incubated with the antibody at room temperature and detected using an HRP conjugated compact polymer system. DAB was used as the chromogen. The section was then counterstained with haematoxylin and mounted with DPX.

Storage:

Store at -20°C. Avoid repeated freeze / thaw cycles.