

**Manufacturer/Supplier:**

WUXI DONGLIN SCI&TECH DEVELOPMENT CO., LTD

**Address:** A1-203 Mingpin CityII, No.8 Xihudong Road, Liangxi District  
Wuxi Jiangsu Province, China

TELE: 86-510-82732223

FAX: 86-510-82720101-8014

**Web :** [www.dldevelop.com](http://www.dldevelop.com)

Email: [info@dldevelop.com.cn](mailto:info@dldevelop.com.cn) [service@dldevelop.com.cn](mailto:service@dldevelop.com.cn)

**Product name:** Rabbit anti-GAPDH Antibody

**Catalog:** DL95634A

**Synonyms:** GAPD; Glyceraldehyde-3-phosphate  
dehydrogenase; GAPDH; Peptidyl-cysteine  
S-nitrosylase GAPDH

**Immunogen:** Recombinant protein corresponding to human  
GAPDH.

**Form:** Liquid

**Concentration:** 1mg/mL

**Size:** 100 ul/50 ul

**Host:** Rabbit

**Reactivity:**  
Human, Mouse, Rat, Rabbit, Chicken, Monkey, Sheep, X

**Application:** WB, IHC

**Clonality:** Polyclonal

**Dilution:** WB (1/2000 - 1/5000),  
IHC (1/100 - 1/200)

**Entrez Gene:** 2597/100042025/24383

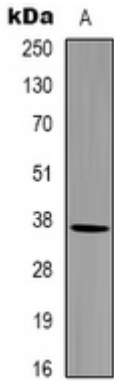
**SwissProt:** P04406/P16858/P04797

**Purification:** The antibody was purified by immunogen affinity chromatography.

**Buffer:** Liquid in 0.42% Potassium phosphate, 0.87% Sodium chloride, pH 7.3, 30% glycerol, and 0.01% sodium azide.

**WB description:**

Western blot analysis of GAPDH expression in 293T (A), NIH3T3 (B), rat brain (C), sheep muscle (D), rabbit testis (E) whole cell lysates.



### IHC description:

Immunohistochemical analysis of GAPDH staining in human breast cancer formalin fixed paraffin embedded tissue section. The section was pre-treated using heat mediated antigen retrieval with sodium citrate buffer (pH 6.0). The section was then incubated with the antibody at room temperature and detected using an HRP conjugated compact polymer system. DAB was used as the chromogen. The section was then counterstained with haematoxylin and mounted with DPX.

### Storage:

Store at -20°C. Avoid repeated freeze / thaw cycles.