

**Manufacturer/Supplier:**

WUXI DONGLIN SCI&TECH DEVELOPMENT CO., LTD

**Address:** A1-203 Mingpin CityII, No.8 Xihudong Road, Liangxi District  
Wuxi Jiangsu Province, China

**TELE:** 86-510-82732223

**FAX:** 86-510-82720101-8014

**Web :** [www.dldevelop.com](http://www.dldevelop.com)

**Email:** [info@dldevelop.com.cn](mailto:info@dldevelop.com.cn) [service@dldevelop.com.cn](mailto:service@dldevelop.com.cn)

**Product name:** Rabbit anti-CLIC4 Antibody

**Catalog:** DL95607A

**Synonyms:** Chloride intracellular channel protein 4;  
Intracellular chloride ion channel protein p64H1

**Immunogen:** KLH-conjugated synthetic peptide encompassing a  
sequence of human CLIC4. The exact sequence is  
proprietary.

**Form:** Liquid

**Concentration:** 1mg/mL

**Size:** 100 ul/50 ul

**Host:** Rabbit

**Reactivity:** Human, Mouse, Rat

**Application:** WB, IHC

**Clonality:** Polyclonal

**Dilution:** WB (1/1000 - 1/2000),

IHC (1/100 - 1/200)

**Entrez Gene:** 25932

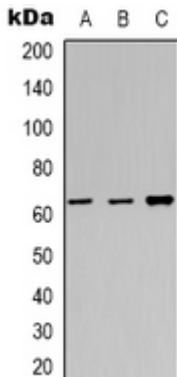
**SwissProt:** Q9Y696

**Purification:** The antibody was purified by immunogen affinity chromatography.

**Buffer:** Liquid in 0.42% Potassium phosphate, 0.87% Sodium chloride, pH 7.3, 30% glycerol, and 0.01% sodium azide.

**WB description:**

Western blot analysis of CLIC4 expression in mouse brain (A), rat brain (B) whole cell lysates.



**IHC description:**

Immunohistochemical analysis of CLIC4 staining in human breast cancer, rat brain formalin fixed paraffin embedded tissue section. The section was pre-treated using heat mediated antigen retrieval with sodium citrate buffer (pH 6.0). The section was then incubated with the antibody at room temperature and detected using an HRP conjugated compact polymer system. DAB was used as the chromogen. The section was then counterstained with haematoxylin and mounted with DPX.

**Storage:**

Store at -20°C. Avoid repeated freeze / thaw cycles.