

Manufacturer/Supplier:

WUXI DONGLIN SCI&TECH DEVELOPMENT CO., LTD

Address: A1-203 Mingpin CityII, No.8 Xihudong Road, Liangxi District
Wuxi Jiangsu Province, China

TELE: 86-510-82732223

FAX: 86-510-82720101-8014

Web : www.dldevelop.com

Email: info@dldevelop.com.cn service@dldevelop.com.cn

Product name: Rabbit anti-Beta-actin Antibody

Catalog: DL95583A

Synonyms: Actin cytoplasmic 1; Beta-actin

Immunogen: Recombinant protein corresponding to human
Beta-actin.

Form: Liquid

Concentration: 1mg/mL

Size: 100 ul/50 ul

Host: Rabbit

Reactivity:

Human, Mouse, Rat, Rabbit, Chicken, Monkey, Sheep, X

Application: WB, IHC, IF/IC

Clonality: Polyclonal

Dilution: WB (1/1000 - 1/3000),

IHC (1/200 - 1/500), IF/IC (1/100 - 1/200)

Entrez Gene: 60/11461/81822

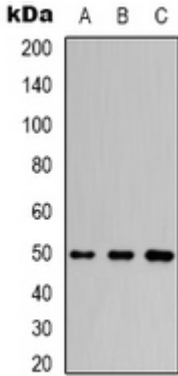
SwissProt: P60709/P60710/P60711

Purification: The antibody was purified by immunogen affinity chromatography.

Buffer: Liquid in 0.42% Potassium phosphate, 0.87% Sodium chloride, pH 7.3, 30% glycerol, and 0.01% sodium azide.

WB description:

Western blot analysis of Beta-actin expression in HepG2 (A), 293T (B), mouse kidney (C), rat liver (D), rabbit testis (E), sheep lung (F) whole cell lysates.

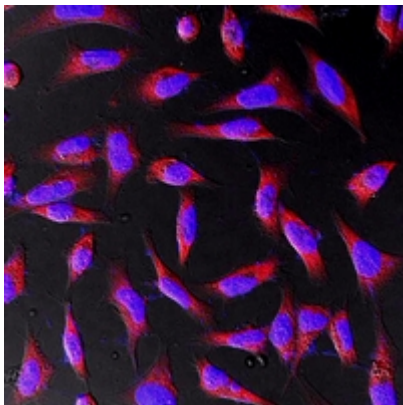


IHC description:

Immunohistochemical analysis of Beta-actin staining in human ovary formalin fixed paraffin embedded tissue section. The section was pre-treated using heat mediated antigen retrieval with sodium citrate buffer (pH 6.0). The section was then incubated with the antibody at room temperature and detected using an HRP conjugated compact polymer system. DAB was used as the chromogen. The section was then counterstained with haematoxylin and mounted with DPX.

IF/ICC description:

Immunofluorescent analysis of Beta-actin staining in Hela cells. Formalin-fixed cells were permeabilized with 0.1% Triton X-100 in TBS for 5-10 minutes and blocked with 3% BSA-PBS for 30 minutes at room temperature. Cells were probed with the primary anti



Storage:

Store at -20°C. Avoid repeated freeze / thaw cycles.