

Manufacturer/Supplier:

WUXI DONGLIN SCI&TECH DEVELOPMENT CO., LTD

Address: A1-203 Mingpin CityII, No.8 Xihudong Road, Liangxi District
Wuxi Jiangsu Province, China

TELE: 86-510-82732223

FAX: 86-510-82720101-8014

Web : www.dldevelop.com

Email: info@dldevelop.com.cn service@dldevelop.com.cn

Product name: Mouse anti-XRCC4 Antibody

Catalog: DL95559A

Synonyms: DNA repair protein XRCC4; X-ray repair
cross-complementing protein 4

Immunogen: KLH-conjugated synthetic peptide encompassing a
sequence of human XRCC4. The exact sequence is
proprietary.

Form: Liquid

Concentration: 1mg/mL

Size: 100 ul/50 ul

Host: Mouse

Reactivity: Human

Application: WB, IHC, IP

Clonality: Monoclonal

Dilution: WB (1/1000 - 1/2000),

IHC (1/200 - 1/500), IP (1/100 - 1/200)

Entrez Gene: 7518

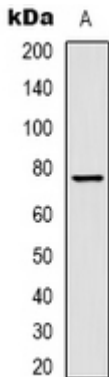
SwissProt: Q13426

Purification:

Buffer: Liquid in 0.42% Potassium phosphate, 0.87% Sodium chloride, pH 7.3, 30% glycerol, and 0.01% sodium azide.

WB description:

Western blot analysis of XRCC4 expression in HeLa (A), 293T (B) whole cell lysates.



IHC description:

Immunohistochemical analysis of XRCC4 staining in human breast cancer formalin fixed paraffin embedded tissue section. The section was pre-treated using heat mediated antigen retrieval with sodium citrate buffer (pH 6.0). The section was then incubated with the antibody at room temperature and detected using an HRP conjugated compact polymer system. DAB was used as the chromogen. The section was then counterstained with haematoxylin and mounted with DPX.

IP description:

Immunoprecipitation of XRCC4 from 0.5mg Hela whole cell extract lysate, using anti-XRCC4 Antibody.



Storage:

Store at -20°C. Avoid repeated freeze / thaw cycles.