

Manufacturer/Supplier:

WUXI DONGLIN SCI&TECH DEVELOPMENT CO., LTD

Address: A1-203 Mingpin CityII, No.8 Xihudong Road, Liangxi District
Wuxi Jiangsu Province, China

TELE: 86-510-82732223

FAX: 86-510-82720101-8014

Web : www.dldevelop.com

Email: info@dldevelop.com.cn service@dldevelop.com.cn

Product name: Mouse anti-Swiprosin-2 Antibody

Catalog: DL95554A

Synonyms: SWS2; EF-hand domain-containing protein D1;
EF-hand domain-containing protein 1; Swiprosin-2

Immunogen: KLH-conjugated synthetic peptide encompassing a
sequence of human Swiprosin-2. The exact
sequence is proprietary.

Form: Liquid

Concentration: 1mg/mL

Size: 100 ul/50 ul

Host: Mouse

Reactivity: Human, Mouse, Rat

Application: WB, IF/IC

Clonality: Monoclonal

Dilution: WB (1/1000 - 1/2000),

IF/IC (1/100 - 1/200)

Entrez Gene: 80303/98363

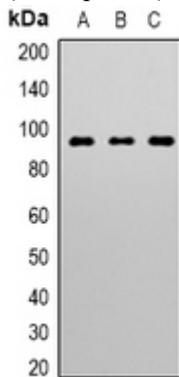
SwissProt: Q9BUP0/Q9D4J1

Purification:

Buffer: Liquid in 0.42% Potassium phosphate, 0.87% Sodium chloride, pH 7.3, 30% glycerol, and 0.01% sodium azide.

WB description:

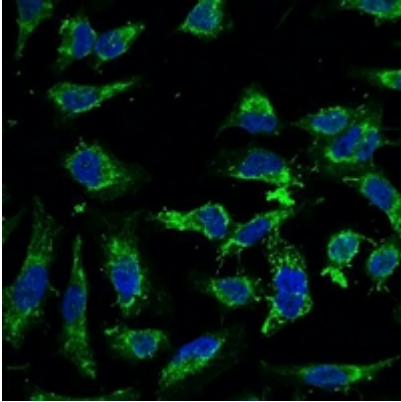
Western blot analysis of Swiprosin-2 expression in mouse spleen (A), rat spleen (B) whole cell lysates.



IF/ICC description:

Immunofluorescent analysis of Swiprosin-2 staining in Hela cells.

Formalin-fixed cells were permeabilized with 0.1% Triton X-100 in TBS for 5-10 minutes and blocked with 3% BSA-PBS for 30 minutes at room temperature. Cells were probed with the primary ant

**Storage:**

Store at -20°C. Avoid repeated freeze / thaw cycles.