

Manufacturer/Supplier:

WUXI DONGLIN SCI&TECH DEVELOPMENT CO., LTD

Address: A1-203 Mingpin CityII, No.8 Xihudong Road. Liangxi District
Wuxi Jiangsu Province, China

TELE: 86-510-82732223

FAX: 86-510-82720101-8014

Web : www.dldevelop.com

Email: info@dldevelop.com.cn service@dldevelop.com.cn

Product name: Mouse anti-PARP1 Antibody

Catalog: DL95542A

Synonyms: ADPRT; PPOL; Poly [ADP-ribose] polymerase 1;
PARP-1; ADP-ribosyltransferase diphtheria
toxin-like 1; ARTD1; NAD(+)
ADP-ribosyltransferase 1; ADPRT 1;
Poly[ADP-ribose] synthase 1

Immunogen: KLH-conjugated synthetic peptide encompassing a
sequence of human PARP1. The exact sequence is
proprietary.

Form: Liquid

Concentration: 1mg/mL

Size: 100 ul/50 ul

Host: Mouse

Reactivity: Human

Application: WB, IHC

Clonality: Monoclonal

Dilution: WB (1/1000 - 1/3000),
IHC (1/200 - 1/500)

Entrez Gene: 142

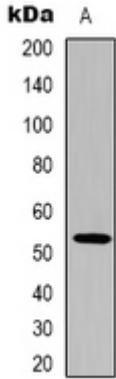
SwissProt: P09874

Purification:

Buffer: Liquid in 0.42% Potassium phosphate, 0.87% Sodium chloride, pH 7.3, 30% glycerol, and 0.01% sodium azide.

WB description:

Western blot analysis of PARP1 expression in Hela (A), 293T (B), Jurkat (C) whole cell lysates.



IHC description:

Immunohistochemical analysis of PARP1 staining in human tonsil formalin fixed paraffin embedded tissue section. The section was pre-treated using heat mediated antigen retrieval with sodium citrate buffer (pH 6.0). The section was then incubated with the antibody at room temperature and detected using an HRP conjugated compact polymer system. DAB was used as the chromogen. The section was then counterstained with haematoxylin and mounted with DPX.

Storage:

Store at -20°C. Avoid repeated freeze / thaw cycles.