

Manufacturer/Supplier:

WUXI DONGLIN SCI&TECH DEVELOPMENT CO., LTD

Address: A1-203 Mingpin CityII, No.8 Xihudong Road, Liangxi District
Wuxi Jiangsu Province, China

TELE: 86-510-82732223

FAX: 86-510-82720101-8014

Web : www.dldevelop.com

Email: info@dldevelop.com.cn service@dldevelop.com.cn

Product name: Mouse anti-Histone H2B Antibody

Catalog: DL95511A

Synonyms: H2BFF; Histone H2B type 1-B; Histone H2B.1;
Histone H2B.f; H2B/f

Immunogen: KLH-conjugated synthetic peptide encompassing a
sequence of human Histone H2B. The exact
sequence is proprietary.

Form: Liquid

Concentration: 1mg/mL

Size: 100 ul/50 ul

Host: Mouse

Reactivity: Human, Mouse, Rat

Application: WB, IHC

Clonality: Monoclonal

Dilution: WB (1/1000 - 1/3000),

IHC (1/200 - 1/500)

Entrez Gene: 3018/319178

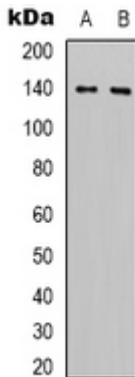
SwissProt: P33778/Q64475

Purification:

Buffer: Liquid in 0.42% Potassium phosphate, 0.87% Sodium chloride, pH 7.3, 30% glycerol, and 0.01% sodium azide.

WB description:

Western blot analysis of Histone H2B expression in HeLa (A), NIH3T3 (B), Raw264.7 (C), rat brain (D), rat kidney (E) whole cell lysates.



IHC description:

Immunohistochemical analysis of Histone H2B staining in human breast cancer formalin fixed paraffin embedded tissue section. The section was pre-treated using heat mediated antigen retrieval with sodium citrate buffer (pH 6.0). The section was then incubated with the antibody at room temperature and detected using an HRP conjugated compact polymer system. DAB was used as the chromogen. The section was then counterstained with haematoxylin and mounted with DPX.

Storage:

Store at -20°C. Avoid repeated freeze / thaw cycles.