

Manufacturer/Supplier:

WUXI DONGLIN SCI&TECH DEVELOPMENT CO., LTD

Address: A1-203 Mingpin CityII, No.8 Xihudong Road, Liangxi District
Wuxi Jiangsu Province, China

TELE: 86-510-82732223

FAX: 86-510-82720101-8014

Web : www.dldevelop.com

Email: info@dldevelop.com.cn service@dldevelop.com.cn

Product name: Mouse anti-HIF1 beta Antibody

Catalog: DL95510A

Synonyms: BHLHE2; Aryl hydrocarbon receptor nuclear translocator; ARNT protein; Class E basic helix-loop-helix protein 2; bHLHe2; Dioxin receptor nuclear translocator; Hypoxia-inducible factor 1-beta; HIF-1-beta; HIF1-beta

Immunogen: Recombinant protein corresponding to mouse HIF1 beta.

Form: Liquid

Concentration: 1mg/mL

Size: 100 ul/50 ul

Host: Mouse

Reactivity: Mouse

Application: WB, IHC

Clonality: Polyclonal

Dilution: WB (1/500 - 1/1000),
IHC (1/50 - 1/200)

Entrez Gene: 12443/58919

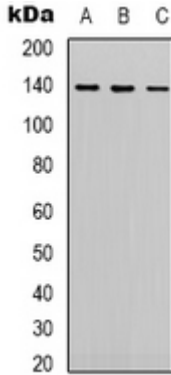
SwissProt: P25322/P39948

Purification: The antibody was purified by immunogen affinity chromatography.

Buffer: Liquid in 0.42% Potassium phosphate, 0.87% Sodium chloride, pH 7.3, 30% glycerol, and 0.01% sodium azide.

WB description:

Western blot analysis of Cyclin D1 expression in C2C12 (A), rat heart (B) whole cell lysates.



IHC description:

Immunohistochemical analysis of Cyclin D1 staining in mouse lung formalin fixed paraffin embedded tissue section. The section was pre-treated using heat mediated antigen retrieval with sodium citrate buffer (pH 6.0). The section was then incubated with the antibody at room temperature and detected using an HRP conjugated compact polymer system. DAB was used as the chromogen. The section was then counterstained with haematoxylin and mounted with DPX.

Storage:

Store at -20°C. Avoid repeated freeze / thaw cycles.