

Manufacturer/Supplier:

WUXI DONGLIN SCI&TECH DEVELOPMENT CO., LTD

Address: A1-203 Mingpin CityII, No.8 Xihudong Road, Liangxi District
Wuxi Jiangsu Province, China

TELE: 86-510-82732223

FAX: 86-510-82720101-8014

Web : www.dldevelop.com

Email: info@dldevelop.com.cn service@dldevelop.com.cn

Product name: Mouse anti-GAPDH Antibody

Catalog: DL95504A

Synonyms: GAPD; Glyceraldehyde-3-phosphate dehydrogenase; GAPDH; Peptidyl-cysteine S-nitrosylase GAPDH

Immunogen: KLH-conjugated synthetic peptide encompassing a sequence of human GAPDH. The exact sequence is proprietary.

Form: Liquid

Concentration: 1mg/mL

Size: 100 ul/50 ul

Host: Mouse

Reactivity: Human, Mouse, Rat, Monkey, Dog,

Application: WB, IHC

Chicken,Rabbit,Pig,Sheep,Insect,
Yeast

Clonality: Monoclonal

Dilution: WB (1/1000 - 1/3000),
IHC (1/100 - 1/200)

Entrez Gene: 2597/100042025/24383

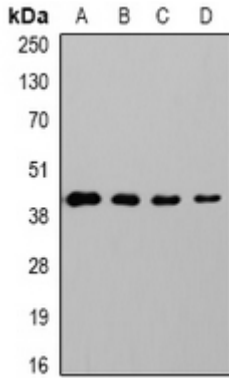
SwissProt: P04406/P16858/P04797

Purification:

Buffer: Liquid in 0.42% Potassium phosphate, 0.87%
Sodium chloride, pH 7.3, 0.2% BSA, 30% glycerol,
and 0.01% sodium azide.

WB description:

Western blot analysis of GAPDH expression in HeLa (A), mouse brain (B), rat brain (C), rabbit muscle (D), sheep muscle (E) whole cell lysates.



IHC description:

Storage:

Store at -20°C. Avoid repeated freeze / thaw cycles.