

**Manufacturer/Supplier:**

WUXI DONGLIN SCI&TECH DEVELOPMENT CO., LTD

**Address:** A1-203 Mingpin CityII, No.8 Xihudong Road, Liangxi District  
Wuxi Jiangsu Province, China

TELE: 86-510-82732223

FAX: 86-510-82720101-8014

**Web :** [www.dldevelop.com](http://www.dldevelop.com)

Email: [info@dldevelop.com.cn](mailto:info@dldevelop.com.cn)    [service@dldevelop.com.cn](mailto:service@dldevelop.com.cn)

**Product name:** Mouse anti-Gamma-enolase Antibody

**Catalog:** DL95501A

**Synonyms:** Gamma-enolase; 2-phospho-D-glycerate hydro-lyase; Enolase 2; Neural enolase; Neuron-specific enolase; NSE

**Immunogen:** KLH-conjugated synthetic peptide encompassing a sequence of human Gamma-enolase. The exact sequence is proprietary.

**Form:** Liquid

**Concentration:** 1mg/mL

**Size:** 100 ul/50 ul

**Host:** Mouse

**Reactivity:** Human, Mouse, Rat

**Application:** WB, IHC

**Clonality:** Monoclonal

**Dilution:** WB (1/1000 - 1/2000),  
IHC (1/100 - 1/200)

**Entrez Gene:** 2026/13807/100911625

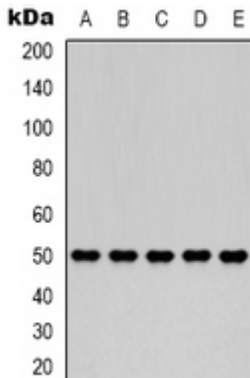
**SwissProt:** P09104/P17183/P07323

**Purification:**

**Buffer:** Liquid in 0.42% Potassium phosphate, 0.87% Sodium chloride, pH 7.3, 30% glycerol, and 0.01% sodium azide.

### WB description:

Western blot analysis of Gamma-enolase expression in Hela (A), Jurkat (B), 293T (C) whole cell lysates.



**IHC description:**

Immunohistochemical analysis of Gamma-enolase staining in human lung cancer formalin fixed paraffin embedded tissue section. The section was pre-treated using heat mediated antigen retrieval with sodium citrate buffer (pH 6.0). The section was then incubated with the antibody at room temperature and detected using an HRP conjugated compact polymer system. DAB was used as the chromogen. The section was then counterstained with haematoxylin and mounted with DPX.

**Storage:**

Store at -20°C. Avoid repeated freeze / thaw cycles.