

Manufacturer/Supplier:

WUXI DONGLIN SCI&TECH DEVELOPMENT CO., LTD

Address: A1-203 Mingpin CityII, No.8 Xihudong Road. Liangxi District
Wuxi Jiangsu Province, China

TELE: 86-510-82732223

FAX: 86-510-82720101-8014

Web : www.dldevelop.com

Email: info@dldevelop.com.cn service@dldevelop.com.cn

Product name: Mouse anti-eIF4AI Antibody

Catalog: DL95493A

Synonyms: DDX2A; EIF4A; Eukaryotic initiation factor 4A-I;
eIF-4A-I; eIF4A-I; ATP-dependent RNA helicase
eIF4A-1

Immunogen: KLH-conjugated synthetic peptide encompassing a
sequence of human eIF4AI. The exact sequence is
proprietary.

Form: Liquid

Concentration: 1mg/mL

Size: 100 ul/50 ul

Host: Mouse

Reactivity: Human, Mouse, Rat

Application: WB, IHC, IF/IC

Clonality: Monoclonal

Dilution: WB (1/1000 - 1/3000),
IHC (1/100 - 1/200), IF/IC (1/100 -
1/200)

Entrez Gene: 1973/13681

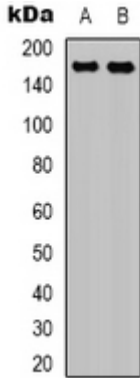
SwissProt: P60842/P60843

Purification:

Buffer: Liquid in 0.42% Potassium phosphate, 0.87%
Sodium chloride, pH 7.3, 30% glycerol, and 0.01%
sodium azide.

WB description:

Western blot analysis of eIF4AI expression in 293T (A), HeLa (B),
HepG2 (C), mouse brain (D) whole cell lysates.

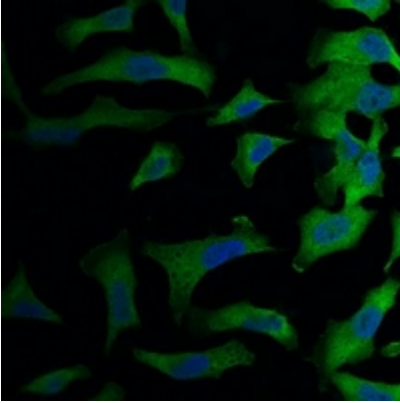


IHC description:

Immunohistochemical analysis of eIF4AI staining in human lung cancer formalin fixed paraffin embedded tissue section. The section was pre-treated using heat mediated antigen retrieval with sodium citrate buffer (pH 6.0). The section was then incubated with the antibody at room temperature and detected using an HRP conjugated compact polymer system. DAB was used as the chromogen. The section was then counterstained with haematoxylin and mounted with DPX.

IF/ICC description:

Immunofluorescent analysis of eIF4AI staining in Hela cells. Formalin-fixed cells were permeabilized with 0.1% Triton X-100 in TBS for 5-10 minutes and blocked with 3% BSA-PBS for 30 minutes at room temperature. Cells were probed with the primary antibody



Storage:

Store at -20°C. Avoid repeated freeze / thaw cycles.