

Manufacturer/Supplier:

WUXI DONGLIN SCI&TECH DEVELOPMENT CO., LTD

Address: A1-203 Mingpin CityII, No.8 Xihudong Road, Liangxi District
Wuxi Jiangsu Province, China

TELE: 86-510-82732223

FAX: 86-510-82720101-8014

Web : www.dldevelop.com

Email: info@dldevelop.com.cn service@dldevelop.com.cn

Product name: Mouse anti-EGFR Antibody

Catalog: DL95491A

Synonyms: ERBB; ERBB1; HER1; Epidermal growth factor receptor; Proto-oncogene c-ErbB-1; Receptor tyrosine-protein kinase erbB-1

Immunogen: KLH-conjugated synthetic peptide encompassing a sequence of human EGFR. The exact sequence is proprietary.

Form: Liquid

Concentration: 1mg/mL

Size: 100 ul/50 ul

Host: Mouse

Reactivity: Human

Application: WB, IF/IC, IP

Clonality: Monoclonal

Dilution: WB (1/1000 - 1/3000),
IF/IC (1/100 - 1/200), IP (1/100 -
1/200)

Entrez Gene: 1956

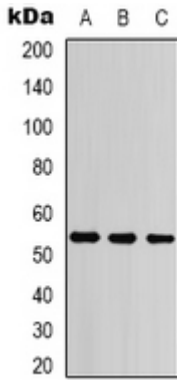
SwissProt: P00533

Purification:

Buffer: Liquid in 0.42% Potassium phosphate, 0.87%
Sodium chloride, pH 7.3, 30% glycerol, and 0.01%
sodium azide.

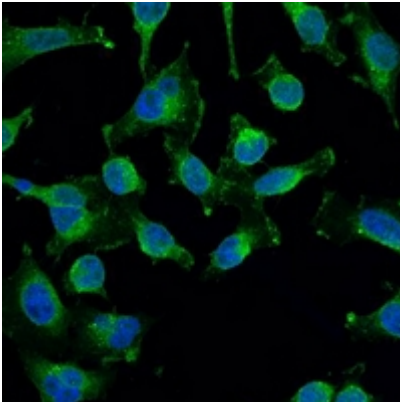
WB description:

Western blot analysis of EGFR expression in A431 (A), Hela (B)
whole cell lysates.



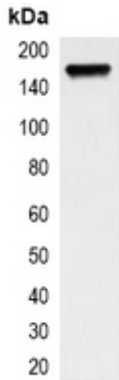
IF/ICC description:

Immunofluorescent analysis of EGFR staining in HeLa cells. Formalin-fixed cells were permeabilized with 0.1% Triton X-100 in TBS for 5-10 minutes and blocked with 3% BSA-PBS for 30 minutes at room temperature. Cells were probed with the primary antibody i



IP description:

Immunoprecipitation of EGFR from 0.5mg Hela whole cell extract lysate, using anti-EGFR Antibody.



Storage:

Store at -20°C. Avoid repeated freeze / thaw cycles.