

Manufacturer/Supplier:

WUXI DONGLIN SCI&TECH DEVELOPMENT CO., LTD

Address: A1-203 Mingpin CityII, No.8 Xihudong Road. Liangxi District
Wuxi Jiangsu Province, China

TELE: 86-510-82732223

FAX: 86-510-82720101-8014

Web : www.dldevelop.com

Email: info@dldevelop.com.cn service@dldevelop.com.cn

Product name: Mouse anti-Cytokeratin 7 Antibody

Catalog: DL95489A

Synonyms: SCL; Keratin type II cytoskeletal 7; Cytokeratin-7;
CK-7; Keratin-7; K7; Sarcolectin; Type-II keratin
Kb7

Immunogen: KLH-conjugated synthetic peptide encompassing a
sequence of human Cytokeratin 7. The exact
sequence is proprietary.

Form: Liquid

Concentration: 1mg/mL

Size: 100 ul/50 ul

Host: Mouse

Reactivity: Human, Mouse, Rat

Application: WB, IHC, IP

Clonality: Monoclonal

Dilution: WB (1/1000 - 1/2000),
IHC (1/100 - 1/200), IP (1/50 -
1/200)

Entrez Gene: 3855/110310/300242

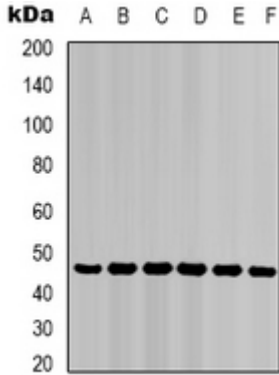
SwissProt: P08729/Q9DCV7/Q6IG12

Purification:

Buffer: Liquid in 0.42% Potassium phosphate, 0.87% Sodium chloride, pH 7.3, 30% glycerol, and 0.01% sodium azide.

WB description:

Western blot analysis of Cytokeratin 7 expression in Hela (A), mouse kidney (B), mouse brain (C) whole cell lysates.



IHC description:

Immunohistochemical analysis of Cytokeratin 7 staining in human lung cancer formalin fixed paraffin embedded tissue section. The section was pre-treated using heat mediated antigen retrieval with sodium citrate buffer (pH 6.0). The section was then incubated with the antibody at room temperature and detected using an HRP conjugated compact polymer system. DAB was used as the chromogen. The section was then counterstained with haematoxylin and mounted with DPX.

IP description:

Immunoprecipitation of Cytokeratin 7 from 0.5mg Hela whole cell extract lysate, using anti-Cytokeratin 7 Antibody.



Storage:

Store at -20°C. Avoid repeated freeze / thaw cycles.