

Manufacturer/Supplier:

WUXI DONGLIN SCI&TECH DEVELOPMENT CO., LTD

Address: A1-203 Mingpin CityII, No.8 Xihudong Road, Liangxi District
Wuxi Jiangsu Province, China

TELE: 86-510-82732223

FAX: 86-510-82720101-8014

Web : www.dldevelop.com

Email: info@dldevelop.com.cn service@dldevelop.com.cn

Product name: Mouse anti-Cytokeratin 6 Antibody

Catalog: DL95488A

Synonyms: KRT6A; K6A; KRT6D; Keratin type II cytoskeletal 6A; Cytokeratin-6A; CK-6A; Cytokeratin-6D; CK-6D; Keratin-6A; K6A; Type-II keratin Kb6; allergen Hom s 5; KRT6B; K6B; KRTL1; Keratin type II cytoskeletal 6B; Cytokeratin-6B; CK-6B; Keratin-6B; K6B; Type-II k

Immunogen: KLH-conjugated synthetic peptide encompassing a sequence of human Cytokeratin 6. The exact sequence is proprietary.

Form: Liquid

Concentration: 1mg/mL

Size: 100 ul/50 ul

Host: Mouse

Reactivity: Human

Application: WB

Clonality: Monoclonal

Dilution: WB (1/1000 - 1/2000)

Entrez Gene:

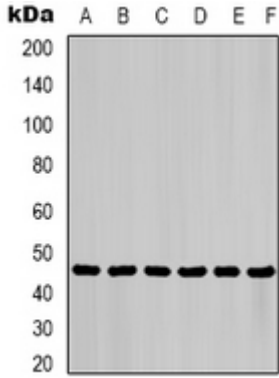
SwissProt: P02538; P04259; P48668

Purification:

Buffer: Liquid in 0.42% Potassium phosphate, 0.87% Sodium chloride, pH 7.3, 30% glycerol, and 0.01% sodium azide.

WB description:

Western blot analysis of Cytokeratin 6 expression in HeLa (A), HepG2 (B) whole cell lysates.



Storage:

Store at -20°C. Avoid repeated freeze / thaw cycles.