

Manufacturer/Supplier:

WUXI DONGLIN SCI&TECH DEVELOPMENT CO., LTD

Address: A1-203 Mingpin CityII, No.8 Xihudong Road, Liangxi District
Wuxi Jiangsu Province, China

TELE: 86-510-82732223

FAX: 86-510-82720101-8014

Web : www.dldevelop.com

Email: info@dldevelop.com.cn service@dldevelop.com.cn

Product name: Mouse anti-Cytokeratin 17 Antibody

Catalog: DL95484A

Synonyms: Keratin type I cytoskeletal 17; 39.1; Cytokeratin-17;
CK-17; Keratin-17; K17

Immunogen: KLH-conjugated synthetic peptide encompassing a
sequence of human Cytokeratin 17. The exact
sequence is proprietary.

Form: Liquid

Concentration: 1mg/mL

Size: 100 ul/50 ul

Host: Mouse

Reactivity: Human

Application: WB, IP

Clonality: Monoclonal

Dilution: WB (1/1000 - 1/2000),

IP (1/50 - 1/200)

Entrez Gene: 3872

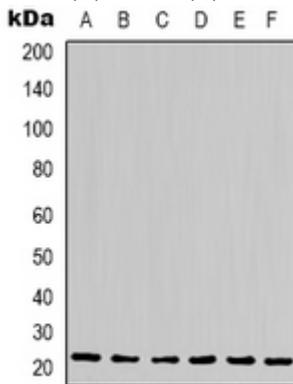
SwissProt: Q04695

Purification:

Buffer: Liquid in 0.42% Potassium phosphate, 0.87% Sodium chloride, pH 7.3, 30% glycerol, and 0.01% sodium azide.

WB description:

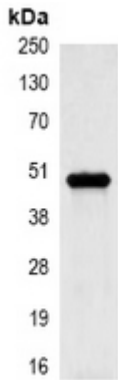
Western blot analysis of Cytokeratin 17 expression in HeLa (A), MCF7 (B), 293T (C) whole cell lysates.



IP description:

Immunoprecipitation of Cytokeratin 17 from 0.5mg HeLa whole

cell extract lysate, using anti-Cytokeratin 17 Antibody.



Storage:

Store at -20°C. Avoid repeated freeze / thaw cycles.