

Manufacturer/Supplier:

WUXI DONGLIN SCI&TECH DEVELOPMENT CO., LTD

Address: A1-203 Mingpin CityII, No.8 Xihudong Road, Liangxi District
Wuxi Jiangsu Province, China

TELE: 86-510-82732223

FAX: 86-510-82720101-8014

Web : www.dldevelop.com

Email: info@dldevelop.com.cn service@dldevelop.com.cn

Product name: Mouse anti-CREB Antibody

Catalog: DL95481A

Synonyms: Cyclic AMP-responsive element-binding protein 1;
CREB-1; cAMP-responsive element-binding protein
1

Immunogen: Recombinant protein corresponding to human
CREB.

Form: Liquid

Concentration: 1mg/mL

Size: 100 ul/50 ul

Host: Mouse

Reactivity: Human, Mouse

Application: WB, IHC

Clonality: Monoclonal

Dilution: WB (1/500 - 1/1000),

IHC (1/100 - 1/200)

Entrez Gene: 1385

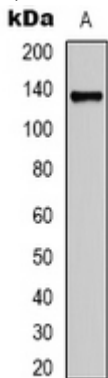
SwissProt: P16220

Purification:

Buffer: Liquid in 0.42% Potassium phosphate, 0.87% Sodium chloride, pH 7.3, 30% glycerol, and 0.01% sodium azide.

WB description:

Western blot analysis of CREB expression in A431 (A), NIH3T3 (B) whole cell lysates.



IHC description:

Immunohistochemical analysis of CREB staining in human lung

cancer formalin fixed paraffin embedded tissue section. The section was pre-treated using heat mediated antigen retrieval with sodium citrate buffer (pH 6.0). The section was then incubated with the antibody at room temperature and detected using an HRP conjugated compact polymer system. DAB was used as the chromogen. The section was then counterstained with haematoxylin and mounted with DPX.

Storage:

Store at -20°C. Avoid repeated freeze / thaw cycles.