

**Manufacturer/Supplier:**

WUXI DONGLIN SCI&TECH DEVELOPMENT CO., LTD

**Address:** A1-203 Mingpin CityII, No.8 Xihudong Road, Liangxi District  
Wuxi Jiangsu Province, China

TELE: 86-510-82732223

FAX: 86-510-82720101-8014

**Web :** [www.dldevelop.com](http://www.dldevelop.com)

Email: [info@dldevelop.com.cn](mailto:info@dldevelop.com.cn)    [service@dldevelop.com.cn](mailto:service@dldevelop.com.cn)

**Product name:** Mouse anti-Cleaved PARP1 Antibody

**Catalog:** DL95478A

**Synonyms:** ADPRT; PPOL; Poly [ADP-ribose] polymerase 1;  
PARP-1; ADP-ribosyltransferase diphtheria  
toxin-like 1; ARTD1; NAD(+)  
ADP-ribosyltransferase 1; ADPRT 1;  
Poly[ADP-ribose] synthase 1

**Immunogen:** KLH-conjugated synthetic peptide encompassing a  
sequence of human Cleaved PARP1. The exact  
sequence is proprietary.

**Form:** Liquid

**Concentration:** 1mg/mL

**Size:** 100 ul/50 ul

**Host:** Mouse

**Reactivity:** Human

**Application:** WB, IHC

**Clonality:** Monoclonal

**Dilution:** WB (1/2000 - 1/5000),  
IHC (1/200 - 1/500)

**Entrez Gene:** 142

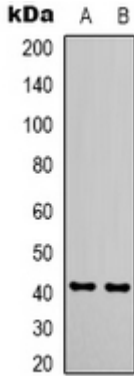
**SwissProt:** P09874

**Purification:**

**Buffer:** Liquid in 0.42% Potassium phosphate, 0.87% Sodium chloride, pH 7.3, 30% glycerol, and 0.01% sodium azide.

**WB description:**

Western blot analysis of Cleaved PARP1 expression in Jurkat (A) whole cell lysates.



### IHC description:

Immunohistochemical analysis of Cleaved PARP1 staining in human tonsil formalin fixed paraffin embedded tissue section. The section was pre-treated using heat mediated antigen retrieval with sodium citrate buffer (pH 6.0). The section was then incubated with the antibody at room temperature and detected using an HRP conjugated compact polymer system. DAB was used as the chromogen. The section was then counterstained with haematoxylin and mounted with DPX.

### Storage:

Store at -20°C. Avoid repeated freeze / thaw cycles.