

Manufacturer/Supplier:

WUXI DONGLIN SCI&TECH DEVELOPMENT CO., LTD

Address: A1-203 Mingpin CityII, No.8 Xihudong Road, Liangxi District
Wuxi Jiangsu Province, China

TELE: 86-510-82732223

FAX: 86-510-82720101-8014

Web : www.dldevelop.com

Email: info@dldevelop.com.cn service@dldevelop.com.cn

Product name: Mouse anti-CD45 Antibody

Catalog: DL95475A

Synonyms: CD45; Receptor-type tyrosine-protein phosphatase C; Leukocyte common antigen; L-CA; T200; CD45

Immunogen: KLH-conjugated synthetic peptide encompassing a sequence of human CD45. The exact sequence is proprietary.

Form: Liquid

Concentration: 1mg/mL

Size: 100 ul/50 ul

Host: Mouse

Reactivity: Human

Application: WB

Clonality: Monoclonal

Dilution: WB (1/1000 - 1/2000)

Entrez Gene: 5788

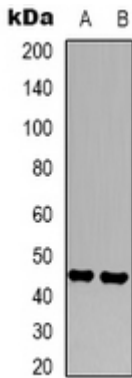
SwissProt: P08575

Purification:

Buffer: Liquid in 0.42% Potassium phosphate, 0.87% Sodium chloride, pH 7.3, 30% glycerol, and 0.01% sodium azide.

WB description:

Western blot analysis of CD45 expression in Hela (A) whole cell lysates.



Storage:

Store at -20°C. Avoid repeated freeze / thaw cycles.