

**Manufacturer/Supplier:**

WUXI DONGLIN SCI&TECH DEVELOPMENT CO., LTD

**Address:** A1-203 Mingpin CityII, No.8 Xihudong Road, Liangxi District  
Wuxi Jiangsu Province, China

TELE: 86-510-82732223

FAX: 86-510-82720101-8014

**Web :** [www.dldevelop.com](http://www.dldevelop.com)

Email: [info@dldevelop.com.cn](mailto:info@dldevelop.com.cn)    [service@dldevelop.com.cn](mailto:service@dldevelop.com.cn)

**Product name:** Mouse anti-Caspase 9 Antibody

**Catalog:** DL95472A

**Synonyms:** MCH6; Caspase-9; CASP-9; Apoptotic protease  
Mch-6; Apoptotic protease-activating factor 3;  
APAF-3; ICE-like apoptotic protease 6; ICE-LAP6

**Immunogen:** KLH-conjugated synthetic peptide encompassing a  
sequence of human Caspase 9. The exact sequence  
is proprietary.

**Form:** Liquid

**Concentration:** 1mg/mL

**Size:** 100 ul/50 ul

**Host:** Mouse

**Reactivity:** Human, Mouse, Rat

**Application:** WB, IF/IC, IP

**Clonality:** Monoclonal

**Dilution:** WB (1/1000 - 1/3000),  
IP (1/50 - 1/200)

**Entrez Gene:** 842

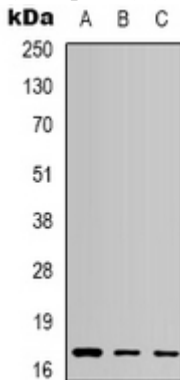
**SwissProt:** P55211

**Purification:**

**Buffer:** Liquid in 0.42% Potassium phosphate, 0.87% Sodium chloride, pH 7.3, 30% glycerol, and 0.01% sodium azide.

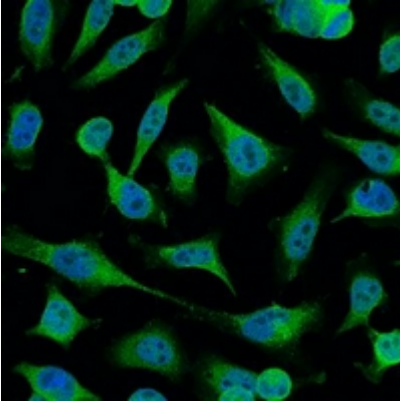
**WB description:**

Western blot analysis of Caspase 9 expression in Hela (A), Jurkat (B), HepG2 (C), mouse heart (D), rat heart (E) whole cell lysates.



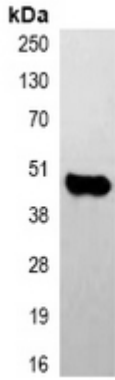
**IF/ICC description:**

Immunofluorescent analysis of Caspase 9 staining in HeLa cells. Formalin-fixed cells were permeabilized with 0.1% Triton X-100 in TBS for 5-10 minutes and blocked with 3% BSA-PBS for 30 minutes at room temperature. Cells were probed with the primary antib



**IP description:**

Immunoprecipitation of Caspase 9 from 0.5mg HeLa whole cell extract lysate, using anti-Caspase 9 Antibody.



**Storage:**

Store at -20°C. Avoid repeated freeze / thaw cycles.