

Manufacturer/Supplier:

WUXI DONGLIN SCI&TECH DEVELOPMENT CO., LTD

Address: A1-203 Mingpin CityII, No.8 Xihudong Road, Liangxi District
Wuxi Jiangsu Province, China

TELE: 86-510-82732223

FAX: 86-510-82720101-8014

Web : www.dldevelop.com

Email: info@dldevelop.com.cn service@dldevelop.com.cn

Product name: Mouse anti-Beta-tubulin Antibody

Catalog: DL95466A

Synonyms: TUBB4; Tubulin beta-3 chain; Tubulin beta-4 chain; Tubulin beta-III

Immunogen: KLH-conjugated synthetic peptide encompassing a sequence of human Beta-tubulin. The exact sequence is proprietary.

Form: Liquid

Concentration: 1mg/mL

Size: 100 ul/50 ul

Host: Mouse

Reactivity:
Human, Mouse, Rat, Monkey, Dog,
Chicken, Rabbit

Application: WB, IHC, IP

Clonality: Monoclonal

Dilution: WB (1/1000 - 1/3000),
IHC (1/50 - 1/100), IP (1/50 -
1/100)

Entrez Gene: 10381/22152/246118

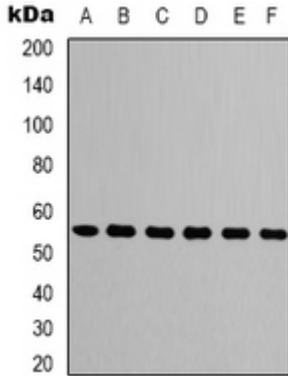
SwissProt: Q13509/Q9ERD7/Q4QRB4

Purification:

Buffer: Liquid in 0.42% Potassium phosphate, 0.87%
Sodium chloride, pH 7.3, 0.2% BSA, 30% glycerol,
and 0.01% sodium azide.

WB description:

Western blot analysis of Beta-tubulin expression in Hela (A),
mouse kidney (B), rat heart (C) whole cell lysates.

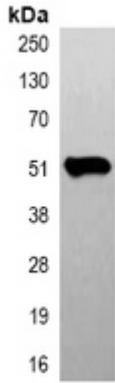


IHC description:

Immunohistochemical analysis of Beta-tubulin staining in human colon formalin fixed paraffin embedded tissue section. The section was pre-treated using heat mediated antigen retrieval with sodium citrate buffer (pH 6.0). The section was then incubated with the antibody at room temperature and detected using an HRP conjugated compact polymer system. DAB was used as the chromogen. The section was then counterstained with haematoxylin and mounted with DPX.

IP description:

Immunoprecipitation of Beta-tubulin from 0.5mg mouse brain whole cell extract lysate, using anti-Beta-tubulin Antibody.



Storage:

Store at -20°C. Avoid repeated freeze / thaw cycles.