

**Manufacturer/Supplier:**

WUXI DONGLIN SCI&TECH DEVELOPMENT CO., LTD

**Address:** A1-203 Mingpin CityII, No.8 Xihudong Road, Liangxi District  
Wuxi Jiangsu Province, China

TELE: 86-510-82732223

FAX: 86-510-82720101-8014

**Web :** [www.dldevelop.com](http://www.dldevelop.com)

Email: [info@dldevelop.com.cn](mailto:info@dldevelop.com.cn)    [service@dldevelop.com.cn](mailto:service@dldevelop.com.cn)

**Product name:** Mouse anti-Beta-tubulin Antibody

**Catalog:** DL95465A

**Synonyms:** TUBB4; Tubulin beta-3 chain; Tubulin beta-4 chain; Tubulin beta-III

**Immunogen:** KLH-conjugated synthetic peptide encompassing a sequence of human Beta-tubulin. The exact sequence is proprietary.

**Form:** Liquid

**Concentration:** 1mg/mL

**Size:** 100 ul/50 ul

**Host:** Mouse

**Reactivity:** Human, Mouse, Rat

**Application:** WB, IHC, IF/IC

**Clonality:** Monoclonal

**Dilution:** WB (1/5000 - 1/10000),

IHC (1/100 - 1/200), IF/IC (1/100 - 1/200)

**Entrez Gene:** 10381/22152/246118

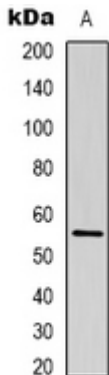
**SwissProt:** Q13509/Q9ERD7/Q4QRB4

**Purification:**

**Buffer:** Liquid in 0.42% Potassium phosphate, 0.87% Sodium chloride, pH 7.3, 30% glycerol, and 0.01% sodium azide.

**WB description:**

Western blot analysis of Beta-tubulin expression in Hela (A), mouse brain (B), rat brain (C) whole cell lysates.

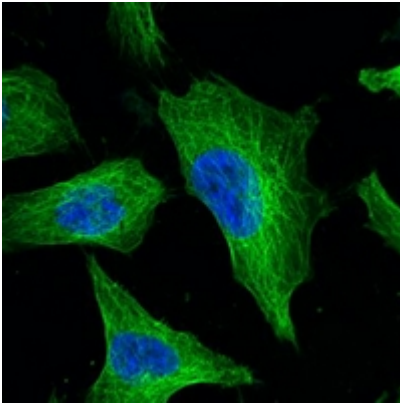


**IHC description:**

Immunohistochemical analysis of Beta-tubulin staining in human tonsil formalin fixed paraffin embedded tissue section. The section was pre-treated using heat mediated antigen retrieval with sodium citrate buffer (pH 6.0). The section was then incubated with the antibody at room temperature and detected using an HRP conjugated compact polymer system. DAB was used as the chromogen. The section was then counterstained with haematoxylin and mounted with DPX.

### **IF/ICC description:**

Immunofluorescent analysis of Beta-tubulin staining in Hela cells. Formalin-fixed cells were permeabilized with 0.1% Triton X-100 in TBS for 5-10 minutes and blocked with 3% BSA-PBS for 30 minutes at room temperature. Cells were probed with the primary an



### **Storage:**

Store at -20°C. Avoid repeated freeze / thaw cycles.