

Manufacturer/Supplier:

WUXI DONGLIN SCI&TECH DEVELOPMENT CO., LTD

Address: A1-203 Mingpin CityII, No.8 Xihudong Road, Liangxi District
Wuxi Jiangsu Province, China

TELE: 86-510-82732223

FAX: 86-510-82720101-8014

Web : www.dldevelop.com

Email: info@dldevelop.com.cn service@dldevelop.com.cn

Product name: Mouse anti-Beta-actin Antibody

Catalog: DL95455A

Synonyms: Actin cytoplasmic 1; Beta-actin

Immunogen: KLH-conjugated synthetic peptide encompassing a sequence of human Beta-actin. The exact sequence is proprietary.

Form: Liquid

Concentration: 1mg/mL

Size: 100 ul/50 ul

Host: Mouse

Reactivity:

Human, Mouse, Rat, Monkey, Dog

Application: WB

Clonality: Monoclonal

Dilution: WB (1/1000 - 1/3000)

Entrez Gene: 60/11461/81822

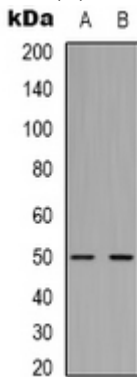
SwissProt: P60709/P60710/P60711

Purification:

Buffer: Liquid in 0.42% Potassium phosphate, 0.87% Sodium chloride, pH 7.3, 0.2% BSA, 30% glycerol, and 0.01% sodium azide.

WB description:

Western blot analysis of Beta-actin expression in Hela (A), mouse brain (B), rat brain (C) whole cell lysates.



Storage:

Store at -20°C. Avoid repeated freeze / thaw cycles.