

Manufacturer/Supplier:

WUXI DONGLIN SCI&TECH DEVELOPMENT CO., LTD

Address: A1-203 Mingpin CityII, No.8 Xihudong Road, Liangxi District
Wuxi Jiangsu Province, China

TELE: 86-510-82732223

FAX: 86-510-82720101-8014

Web : www.dldevelop.com

Email: info@dldevelop.com.cn service@dldevelop.com.cn

Product name: Mouse anti-Beta2A-tubulin Antibody

Catalog: DL95453A

Synonyms: TUBB2; Tubulin beta-2A chain; Tubulin beta class IIa

Immunogen: KLH-conjugated synthetic peptide encompassing a sequence of human Beta2A-tubulin. The exact sequence is proprietary.

Form: Liquid

Concentration: 1mg/mL

Size: 100 ul/50 ul

Host: Mouse

Reactivity: Human, Mouse, Rat

Application: WB, IP

Clonality: Monoclonal

Dilution: WB (1/50000 -

1/100000), IP (1/100 - 1/200)

Entrez Gene: 7280/22151/498736

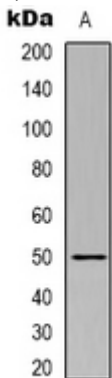
SwissProt: Q13885/Q7TMM9/P85108

Purification:

Buffer: Liquid in 0.42% Potassium phosphate, 0.87% Sodium chloride, pH 7.3, 30% glycerol, and 0.01% sodium azide.

WB description:

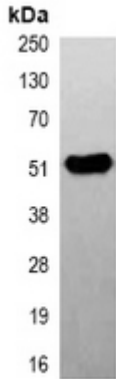
Western blot analysis of Beta2A-tubulin expression in mouse brain (A), rat brain (B) whole cell lysates.



IP description:

Immunoprecipitation of Beta2A-tubulin from 0.5mg mouse brain

whole cell extract lysate, using anti-Beta2A-tubulin Antibody.



Storage:

Store at -20°C. Avoid repeated freeze / thaw cycles.