

Manufacturer/Supplier:

WUXI DONGLIN SCI&TECH DEVELOPMENT CO., LTD

Address: A1-203 Mingpin CityII, No.8 Xihudong Road, Liangxi District
Wuxi Jiangsu Province, China

TELE: 86-510-82732223

FAX: 86-510-82720101-8014

Web : www.dldevelop.com

Email: info@dldevelop.com.cn service@dldevelop.com.cn

Product name: Mouse anti-Beta1-tubulin Antibody

Catalog: DL95452A

Synonyms: Tubulin beta-1 chain

Immunogen: KLH-conjugated synthetic peptide encompassing a sequence of human Beta1-tubulin. The exact sequence is proprietary.

Form: Liquid

Concentration: 1mg/mL

Size: 100 ul/50 ul

Host: Mouse

Reactivity: Human, Mouse, Rat

Application: WB, IHC

Clonality: Monoclonal

Dilution: WB (1/5000 - 1/10000),
IHC (1/200 - 1/500)

Entrez Gene: 81027/545486

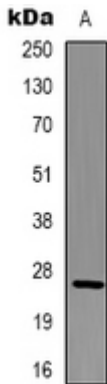
SwissProt: Q9H4B7/A2AQ07

Purification:

Buffer: Liquid in 0.42% Potassium phosphate, 0.87% Sodium chloride, pH 7.3, 30% glycerol, and 0.01% sodium azide.

WB description:

Western blot analysis of Beta1-tubulin expression in Hela (A), mouse brain (B), rat brain (C) whole cell lysates.



IHC description:

Immunohistochemical analysis of Beta1-tubulin staining in human tonsil formalin fixed paraffin embedded tissue section. The section was

pre-treated using heat mediated antigen retrieval with sodium citrate buffer (pH 6.0). The section was then incubated with the antibody at room temperature and detected using an HRP conjugated compact polymer system. DAB was used as the chromogen. The section was then counterstained with haematoxylin and mounted with DPX.

Storage:

Store at -20°C. Avoid repeated freeze / thaw cycles.